

Complex Cardiovascular Therapeutics 2014

P CCT 2014 Peripheral

Dates

October 30 Thu. - **November 1** Sat., 2014

Venues

Kobe International Exhibition Hall
Portopia Hotel, Kobe, Japan

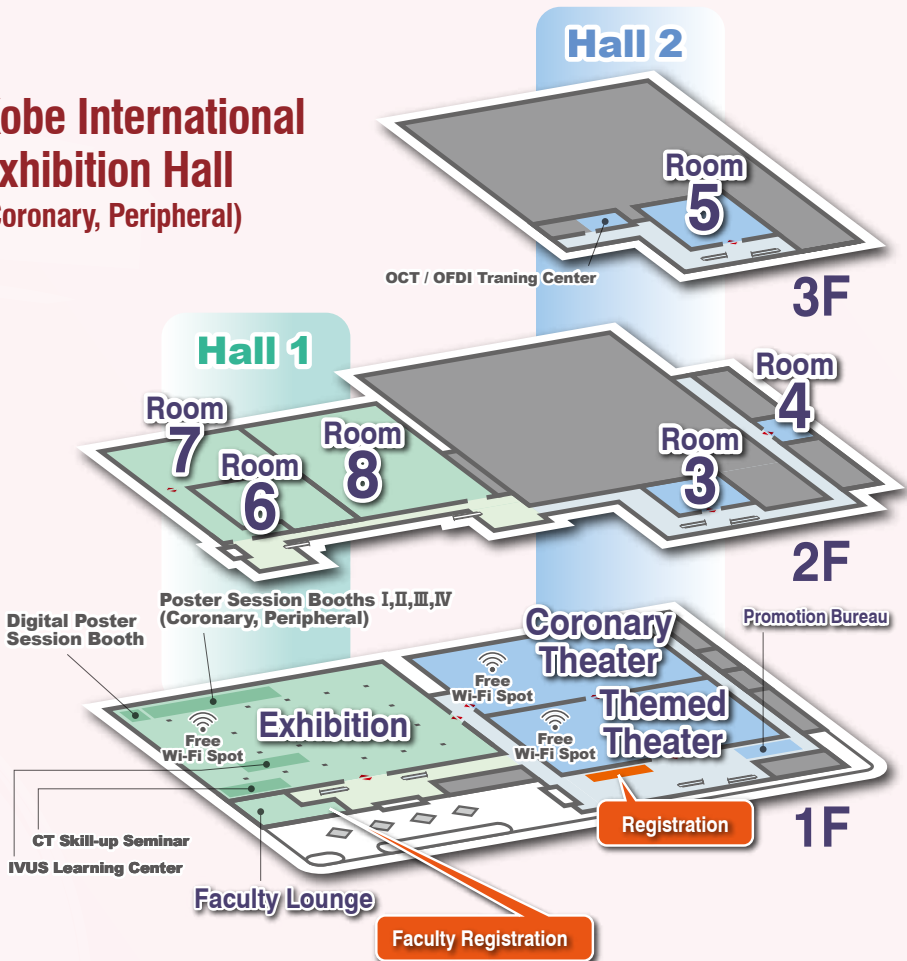
Challenge and Innovation

CCT Website  <http://cct.gr.jp/>

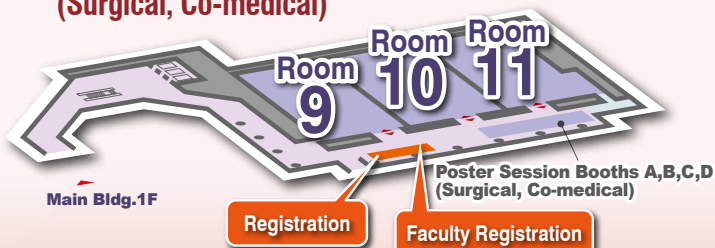


Venue

Kobe International Exhibition Hall (Coronary, Peripheral)



Portopia Hotel South Wing 1F (Surgical, Co-medical)



Main Bldg. 2F Nojigiku: Rotablator Mastership Program

Index

Program at a glance (Coronary, Peripheral)	p. 6
Coronary	p. 16
Peripheral	p.140
Surgical	p.162
Co-medical	p.176
Hands-on and Training Center	p.196
Exhibition	p.208

Information

Language

Coronary English

Peripheral English, Japanese


Surgical, Co-medical Japanese


Simultaneous interpretation is available:


English, Japanese and Chinese: Coronary Theater

English and Japanese: Themed Theater, Room 6, Room 7

※Except for sponsored sessions.

 English translation available

 Japanese translation available

 Chinese translation available

 Japanese only

Registration Fee

Online Registration → <http://cct.gr.jp/2014>

Medical	3 days	JPY 35,000
Medical	1 day	JPY 20,000
Medical(Surgical)	2 days	JPY 18,000
Medical(Intern)*	3 days	JPY 10,000
Co-medical	3 days	JPY 4,000
Industrial Professional	3 days	JPY 35,000

* Medical(Intern) is required to present certification showing they are currently in the internship (4 years period) after graduation from medical school. Failure to do this will be charged the on-site registration fee of Medical. Pre-registration is not required.

** A student can attend the live course free of charge. Please present your student ID or equivalent documents at the on-site registration desk. Pre-registration is not required.

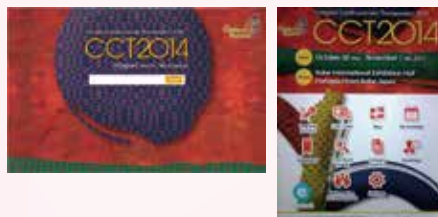
Online Program & Apps

The latest program of CCT2014 will be uploaded on Online Program website, Android and iOS apps. You could search and bookmark session information on PC, smart phone and tablet. Please make the most of the website and apps on site as well as at home.

Website: <http://cct.gr.jp/2014/program/>

Apps: Please search "CCT2014" on Google Play or App Store

Password: cct2014kobe



Free Wi-Fi Spots

Coronary Theater

Themed Theater

Exhibition, Kobe International Exhibition Hall 1, 1F

Notification

No smoking on all site.

No photography and video shooting without permission.

CVIT専門医・認定医資格更新単位
1日参加: 1点、2日以上参加: 2点

Opening Hours

Registration Desk

Kobe International Exhibition Hall 2, 1F

(Coronary, Peripheral)

Portopia Hotel South Wing, 1F

(Surgical, Co-medical)

Oct. 30, 31 7:15 - 18:00

Nov. 1 7:15 - 15:00

Faculty Registration Desk

Kobe International Exhibition Hall 1, 1F

Oct. 30, 31 7:15 - 18:00

Nov. 1 7:15 - 15:00

Exhibition

Kobe International Exhibition Hall 1, 1F

Oct. 30, 31 9:00 - 18:00

Nov. 1 9:00 - 15:00

Food and Beverages

Coffee service will be offered at Kobe International Exhibition Hall 1, 1F and Portopia Hotel 1F, (Service time is limited)

Light meals will be served before morning session and fireside session.

Lunch boxes will be served before luncheon seminar.

Activity

AMEX Club: CCT Fun Run 2014



Date: Nov. 1(Sat.) 7:00-8:00

Location: Kobe PortIsland

Distance: 5km

Instructor: Toshie Kawatsu (Prefectural University of Kumamoto, Japan)

Meeting Point: Portopia Hotel, 1F The lobby

Participation Fee: Free

Notes: To be canceled in case of rain

You're invited to participate in the CCT Fun Run, where you can enjoy a 5km course in Kobe PortIsland under the guidance of Ms. Toshie Kawatsu, a sports instructor and former member of the Japan national team for the women's 10km race-walk. Receive an event T-shirt and enjoy the beautiful scenery of Kobe while jogging with proper guidance from the professional instructor. This fun themed running event is the perfect balance for both new and seasoned runners. Please gather in the lobby on the first floor at the Portopia Hotel at 7:00.

No entry fee and registration are required.

Toshiyuki Matsumura (Kumamoto Rosai Hospital, Japan)

The President of AMEX Club (Anti Metabolic syndrome with Exercise)

Secretariat

On-site secretariat (October 30-November 1 only)

Kobe International Exhibition Hall 2, 1F

Tel: +81-(0)78-303-4007 / +81-(0)78-303-4008

Fax: +81-(0)78-303-4009

		7:30	8:00	9:00	10:00	11:00	12:00	13:00	14:00	15:00	16:00	17:00	18:00	19:00	20:00	21:00
Kobe International Exhibition Hall 2	Coronary Theater			PCI Live Case Transmission Rakuwakai Marutamachi Hospital "Petit Focus Live" TOSHIBA MEDICAL SYSTEMS CORPORATION → p.30			Luncheon Seminar DAIICHI SANKYO CO., LTD. → p.30,57		C-VIT Town Meeting regarding specialist authorization system → p.57	PCI Live Case Transmission Saitama Sekishinkai Hospital → p.31			Fireside Session Abbott Vascular Japan Co., Ltd. → p.31,58			
	Themed Theater	1F		Themed Live Case Transmission Saitama Sekishinkai Hospital → p.32			Luncheon Seminar MSD K.K. → p.58		Themed Live Case Transmission Rakuwakai Marutamachi Hospital → p.33							
	Promotion Bureau		TAVI LIVE from Asan Medical Center, Korea													
	Room 3	2F	Case Competition ACS 1 → p.34 Calcified lesion → p.34				Luncheon Seminar Novartis Pharma K.K. → p.59	Case Competition CTO 1 → p.35 Bifurcation/Ostial/Restenosis → p.36				Fireside Session My best and worst case in cath. lab. → p.37				
	Room 4		Peripheral Case Competition 1 → p.142 Peripheral Case Competition 2 → p.143				Luncheon Seminar Johnson & Johnson K.K. → p.144	Complicated case meet the experts → p.144 All about stent graft → p.145								
Room 5	3F	Evolution of OCT/OFDI imaging technology for PCI treatment → p.38		Bifurcation Club @ CCT → p.39		Luncheon Seminar Bristol-Myers K.K. Pfizer Japan Inc. → p.59	Bioresorbable scaffold → p.40		Coffee Break Lecture TERUMO CORPORATION → p.41,59		Video live demonstration from Middle East: How to treat the complex lesion safely and effectively → p.42					
Kobe International Exhibition Hall 1	Room 6	Morning Session Live case pre-discussion session → p.43,60	TTT @ CCT: BVS and TAVR in Taiwan → p.43,60		NIC @ CCT: My worst nightmares → p.44,61			CCT Live Playback Session → p.44,62		CCT Live Playback Session → p.45,62		Fireside Session The extreme discussion from the insight of developing operators Abbott Vascular Japan Co., Ltd., ASAHI INTECC CO., LTD., Boston Scientific Japan K.K., Japan Lifeline Co., Ltd., Medtronic Japan Co., Ltd., GirusSteich Medical K.K., TERUMO CORPORATION → p.63				
	Room 7	2F	CTO Course → p.46,64		ACS: Practical approach to STEMI for the best outcome → p.47,65		Luncheon Seminar AstraZeneca K.K. → p.47,65	Will the PCI guidelines protect us? → p.48,66		Debate session: IVUS-guided vs. OCT-guided PCI → p.48,67		How to use imaging devices for in-stent restenosis → p.49,67				
	Room 8	How to use imaging devices in calcified lesions → p.49		Present condition and future of debulking → p.50		Luncheon Seminar Takeda Pharmaceutical Company Limited → p.68	Complications → p.50		DCB Summit 2014 NIPRO CORPORATION GOODMAN CO., LTD. → p.51,68		Job Fair for Japanese Cardiologist 2014 → p.69					
	Exhibition	1F	Poster Session → p.52,148 Digital Poster Session → p.56													
Portopia Hotel South Wing	Room 9		Peripheral Video Live 1 → p.146		Peripheral Video Live 2 → p.146		Luncheon Seminar Medtronic Japan Co., Ltd. → p.147	How to session Aorto-iliac intervention → p.147 Femoro-pop intervention 1 → p.147 Femoro-pop intervention 2 → p.148 BTK/BTA intervention → p.148								
	Room 10	1F	Co-medical Program → p.180				Co-medical Luncheon Seminar Abbott Vascular Japan Co., Ltd. → p.180	Co-medical Program → p.181								
	Room 11	Co-medical Program → p.182				Co-medical Program → p.182										

		7:30	8:00	9:00	10:00	11:00	12:00	13:00	14:00	15:00	16:00	17:00	18:00	19:00	20:00	21:00
Kobe International Exhibition Hall 2	Coronary Theater			PCI Live Case Transmission Toyohashi Heart Center → p.70 "Special Focus Live" TERUMO CORPORATION → p.71,99				Luncheon Seminar Boston Scientific Japan K.K.	TAMAI Memorial Lecture → p.71,99 "Special Focus Live" Boston Scientific Japan K.K. → p.72		PCI Live Case Transmission Higashi Takarazuka Satoh Hospital "Special Focus Live" → p.72					
	Themed Theater	1F		"Special Focus Live" DAICHI SANKYO CO., LTD. Themed Live Case Transmission Higashi Takarazuka Satoh Hospital "Petit Focus Live" TOSHIBA MEDICAL SYSTEMS CORPORATION → p.73				Luncheon Seminar Medtronic Japan Co., Ltd.	EVT Live Case Transmission Toyohashi Heart Center → p.150 "Featured Live" TERUMO CORPORATION "Featured Live" Medicon, Inc. → p.151		Big waves from LINC ASAHI INTECC CO., LTD., Johnson & Johnson K.K., TERUMO CORPORATION → p.151					
	Promotion Bureau			Coffee Break Lecture TERUMO CORPORATION	Promotion Session SHIMADZU CORPORATION → p.112					Promotion Session KANEKA MEDIX CORPORATION → p.112,155						
	Room 3	2F		Technical forum 1 CO2 angiography → p.151	Technical forum 2 Echo-guided wiring → p.152	Technical forum 3 Distal puncture → p.152		Luncheon Seminar Boston Scientific Japan K.K. → p.153	Technical forum 4 Direct SFA puncture → p.153	How to use CROSSER → p.153	Carotid artery intervention → p.154	Renal artery intervention → p.154	Fireside Symposium Volcano Japan Co., Ltd. → p.154			
	Room 4		Case Competition				ACS 2 → p.75		Luncheon Seminar SHIMADZU CORPORATION → p.100	Best Intra-coronary imaging Competition (BIC) → p.76		Case Competition Others 1 → p.77				
Room 5	3F	Morning Session Medtronic Japan Co., Ltd. → p.101	Imaging & Slender PCI - How can we use IVUS/FFR/OCT for less invasive PCI? → p.78		How to use imaging devices in bifurcation lesions → p.79		Luncheon Seminar Japan Lifeline Co., Ltd. → p.101	Innovative techniques for complex PCI: Case-based discussions TOSHIBA MEDICAL SYSTEMS CORPORATION → p.80		CARDIOVASCULAR SUMMIT -TCTAP@ CCT2014: Imaging vs. Physiology for LM and Non-LM bifurcation PCI → p.81						
Kobe International Exhibition Hall 1	Room 6	2F	Morning Session Live case pre-discussion session → p.82,102	CIT @ CCT: How to deal with the challenges in CTO angioplasty - a case-based learning approach → p.82,102		India Live @ CCT → p.84,104		Luncheon Seminar ASAHI INTECC CO., LTD → p.84,105	CCT Live Playback Session → p.85,105		Coffee Break Session Abbott Vascular Japan Co., Ltd. → p.106	CCT Live Playback Session → p.85,106				
	Room 7		Fellows Course: To become a master of intervention → p.86,107		Coronary intervention for the left main coronary artery disease → p.87,108		Luncheon Seminar St. Jude Medical Japan Co., Ltd. → p.108	CTO Antegrade Session TOSHIBA MEDICAL SYSTEMS CORPORATION → p.88,109		International Special Session TERUMO CORPORATION → p.89,110						
	Room 8	Up to date of coronary lesion assessment → p.90		DES Summit 2014 → p.90		Luncheon Seminar KANEKA MEDIX CORPORATION → p.91,111	BVS → p.91	TAVI: Heart team discussion for AS patients → p.92								
	Exhibition	1F	Poster Session → p.94,155										Digital Poster Session → p.98			
Portopia Hotel South Wing	Room 9	1F	Surgical Program → p.165				Luncheon Seminar Medtronic Japan Co., Ltd. → p.166	Surgical Program → p.166								
	Room 10		Co-medical Program → p.186				Co-medical Luncheon Seminar BIOTRONIK JAPAN, Inc. → p.186	Co-medical Program → p.187								
	Room 11		Co-medical Program → p.188				Luncheon Seminar Sanofi K.K. → p.111	Co-medical Program → p.188							Award Ceremony	

		7:30	8:00	9:00	10:00	11:00	12:00	13:00	14:00	15:00	16:00	17:00	18:00	19:00
Kobe International Exhibition Hall 2	Coronary Theater			PCI Live Case Transmission Toyohashi Heart Center → p.114			Luncheon Seminar Abbott Vascular Japan Co., Ltd. → p.114,126	PCI Live Case Transmission Toyohashi Heart Center → p.115 "Special Focus Live" ASAHI INTECC CO., LTD.						
	Themed Theater	1F		EVT Live Case Transmission Tokeidai Memorial Hospital → p.157 "Featured Live" Johnson & Johnson K.K. "Featured Live" Boston Scientific Japan K.K.			Luncheon Seminar Johnson & Johnson K.K. Otsuka Pharmaceutical Co., Ltd. → p.158	EVT Live Case Transmission Tokeidai Memorial Hospital → p.159 "Featured Live" ASAHI INTECC CO., LTD. "Featured Live" Abbott Vascular Japan Co., Ltd.						
	Promotion Bureau			Promotion Session FUKUDA DENSHI CO., LTD. → p.130	Coffee Break Lecture Cook Japan → p.160									
	Room 3	2F		Venous intervention → p.160	Acute limb ischemia → p.160	Deep impact of InPact-BTK study → p.161	Luncheon Seminar Tokai Medical Products, Inc. → p.161							
	Room 4		Case Competition CTO 3 → p.116 Others 2 → p.116											
Room 5	3F		Imaging Session: How to use imaging modalities for complex PCI in the DES and DCB era → p.117	Calcified → p.118		Luncheon Seminar Volcano Japan Co., Ltd. → p.126	Innovation in bifurcation PCI → p.119							
Kobe International Exhibition Hall 1	Room 6	2F	Morning Session Live case pre-discussion session → p.120,127	CCT Live Playback Session → p.120,127			Luncheon Seminar Your Health Care Co., Ltd. KANEKA Co., Ltd. → p.128	DCA NIPRO CORPORATION GOODMAN CO., LTD. → p.121,128						
	Room 7		Best and worst cases in daily practice → p.122	LMT disease: What is the suitable revascularization strategy? PCI, CABG or hybrid revascularization? → p.123,129			Luncheon Seminar TOSHIBA MEDICAL SYSTEMS CORPORATION → p.129	ENCORE Seoul @ CCT → p.124						
	Room 8		Let's speak English in live demonstration course! Key point learning from a professional interpreter → p.130	FFR and iFR → p.125										
Portopia Hotel South Wing	Room 9	1F	Co-medical Program → p.192			Co-medical Luncheon Seminar Boston Scientific Japan K.K. → p.192	Co-medical Program → p.192							
	Room 10		Surgical Program → p.170			Surgical Luncheon Seminar CSL Behring K.K. → p.172	Surgical Program → p.172							
	Room 11		Co-medical Program → p.193			Co-medical Program → p.193								
														Award Ceremony

Live Case Transmission Sites & Operators

●Tokeidai Memorial Hospital

Saturday, November 1
Peripheral
Hiroshi Ando, Keisuke Hirano
Yusuke Miyashita, Kazushi Urasawa

Sapporo

●Nagoya Daiichi Red Cross Hospital

Friday, October 31
Surgical
Toshiaki Ito

●Asan Medical Center, Korea

Thursday, October 30
Coronary
Seung-Jung Park

●The Sakakibara Heart Institute of Okayama

Friday, October 31
Surgical
Toshinori Totsugawa

Seoul

Okayama

Takarazuka
Kobe

Kyoto

Nagoya

Toyohashi

Sayama

●Saitama Sekishinkai Hospital

Thursday, October 30
Coronary
Yasushi Asakura, Yuji Hamazaki
Yuji Oikawa, Masahisa Yamane

●Toyohashi Heart Center

Friday, October 31
Coronary
Tetsuo Matsubara, Etsuo Tsuchikane
Junji Yajima
Peripheral
Yoshihisa Kinoshita, Shigeru Nakamura
Hiroyoshi Yokoi

Saturday, November 1
Coronary
Yoshihisa Kinoshita, Tetsuo Matsubara
Kenya Nasu, Masahiko Ochiai
Etsuo Tsuchikane

●Higashi Takarazuka Satoh Hospital

Friday, October 31
Coronary
Yasumi Igarashi, Osamu Katoh
Atsunori Okamura, Satoru Otsuji
Ryohei Yoshikawa

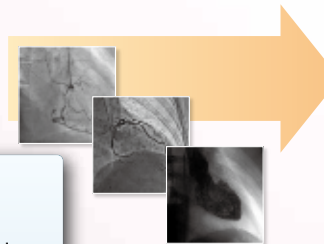
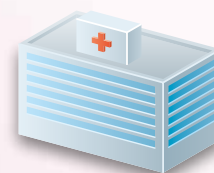
●Rakuwakai Marutamachi Hospital

Thursday, October 30
Coronary
Osamu Katoh, Etsuo Tsuchikane
Takafumi Tsuji, Kinzo Ueda

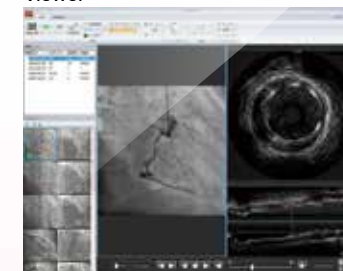
Live Cases Viewer

You can review previous cases and today's cases on demand.

ライブ中継された画像をCCT2014会場に配信。
症例の過去検査と当日のライブ画像をオンデマンドでレビューできます。



Viewer



Live Sites:

- Higashi Takarazuka Satoh Hospital
- Rakuwakai Marutamachi Hospital
- Saitama Sekishinkai Hospital
- Toyohashi Heart Center

Dates October **30** **Thu.** & **31** **Fri.** [9:00 – 18:00]

November **1** **Sat.** [9:00 – 15:00]

Venue 2F, Kobe International Exhibition Hall 1

CCT2014 Live Case Search

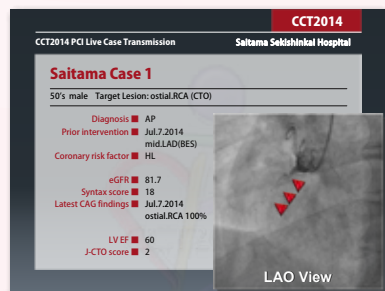
➔ http://cct.gr.jp/2014/live_case/

Search by...

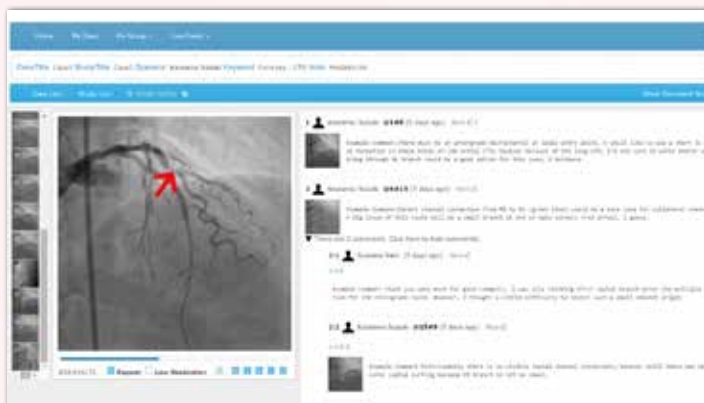
- Institution
- Date

You could check the PCI, Themed, EVT and Surgical Live case slides on CCT2014 website. Please use free Wi-Fi spots on site to view the case data.

Free-Wi-Fi spots locations ☞ See p. 3



Let's Check the CCT Live Cases on e-casebook.com



In the CCT2014, we will hold pre-discussions about live cases' treatment between directors of live sites, operators and session chairs on a case discussion website "e-casebook.com". CCT Administration Office has sent the website URL to physicians who registered CCT2014 before the meeting and ask the attendees to think with us on which purpose you should treat the cases. Please join us in order to cultivate a better understanding of cases' treatments on the day.

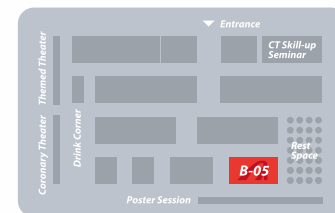
➔ <https://www.e-casebook.com/cct2014>



Guidewire Hands-on Booth with ASAHI ETOSS

October 30 – November 1, 2014

Hall 1, Kobe International Exhibition Hall

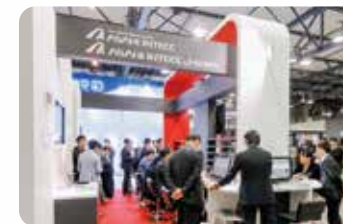


With ASAHI ETOSS, you can learn Guidewire manipulation techniques using an elaborate vessel model, to better understand Guidewire movement inside the lesion. Direct observation of the Guidewire movement on our ETOSS monitor allows better understanding of necessary techniques for manipulation, giving a nearly truly clinical experience. At the same time, you will learn various outstanding characteristics and unique features of Guidewires, allowing you to discover the multiple possibilities at your fingertips.

NEW!

Our new type of ETOSS is available which is rotational view type.

Please come and give it a try at our booth B-05.



Peripheral

Course Directors

Hiroshi Ando
Kasukabe Chuo General Hospital

Keisuke Hirano
Saiseikai Yokohama-City Eastern Hospital

Yoshihisa Kinoshita
Toyohashi Heart Center

Yusuke Miyashita
Shinshu University

Shigeru Nakamura
Kyoto Katsura Hospital

Kinzo Ueda
Rakuwakai Marutamachi Hospital

Kazushi Urasawa
Tokeidai Memorial Hospital

Hiroyoshi Yokoi
Fukuoka Sanno Hospital

Japanese Faculty

Hitoshi Anzai
Ota Memorial Hospital

Masahiko Fujihara
Kishiwada Tokushukai Hospital

Atsushi Funatsu
Kyoto Katsura Hospital

Tsuyoshi Goto
Kurashiki Central Hospital

Ichiro Hamanaka
Rakuwakai Marutamachi Hospital

Takashi Harada
Kitakyushu City Yahata Hospital

Takuya Haraguchi
Tokeidai Memorial Hospital

Akihiro Higashimori
Kishiwada Tokushukai Hospital

Michiaki Higashitani
Sakakibara Heart Institute

Yuki Horita
Kanazawa Cardiovascular Hospital

Koji Hozawa
New Tokyo Hospital

Osamu Iida
Kansai Rosai Hospital

Yuji Ikari
Tokai University School of Medicine

Masanori Inoue
Hiratsuka City Hospital

Naoto Inoue
Sendai Kousei Hospital/
Tokyo Kamata Hospital

Nobuhito Kaneko
Higashiyama Hospital

Katsuhiko Kawaguchi
Komaki City Hospital

Osami Kawarada
National Cerebral and Cardiovascular Center

Daizo Kawasaki
Morinomiya Hospital

Tomohiro Kawasaki
Shin-Koga Hospital

Tomoko Kobayashi
Kyoto Katsura Hospital

Takuyuki Komoda
Daiyukai Daiichi Hospital

Ryoji Koshida
Tokeidai Memorial Hospital

Susumu Matsuda
Shutou Sougou Hospital

Akira Miyamoto
Kikuna Memorial Hospital

Tatsuya Nakama
Miyazaki Medical Association Hospital

Akihiro Nakamura
Iwate Prefectural Central Hospital

Masato Nakamura
Toho University Ohashi Medical Center

Masatsugu Nakano
Saiseikai Yokohama-City Eastern Hospital

Shinsuke Nanto
Nishinomiya Municipal Central Hospital

Yoichi Nozaki
Hokko Memorial Hospital

Yasuhiro Oba
Nagoya Heart Center

Nobuhiko Ogata
Jichi Medical University Hospital

Katsuhiko Sato
Tokeidai Memorial Hospital

Tadayo Sato
Akita Medical Center

Tomoyasu Sato
Tsuchiya General Hospital

Yoshitane Seino
Hoshi General Hospital

Norihiko Shinozaki
Tokai University School of Medicine

Yoshiaki Shintani
Shin-Koga Hospital

Yoshimitsu Soga
Kokura Memorial Hospital

Kenji Suzuki
Sendai Kousei Hospital

Hideyuki Takimura
Saiseikai Yokohama-City Eastern Hospital

Yoichi Tatsukawa
Oita Oka Hospital

Yuta Terabe
Saitama Medical University Hospital

Taketsugu Tsuchiya
Kanazawa Medical University Hospital

Yuichi Ujije
Hoshi General Hospital

Makoto Utsunomiya
Tokyo Rosai Hospital

Yoshito Yamamoto
Iwaki Kyouritsu General Hospital

Takehiro Yamashita
Cardio-vascular Center Hokkaido Ohno Hospital

Yoshiaki Yokoi
Kishiwada Tokushukai Hospital

International Faculty

Giancarlo Biamino
Clinica Montevergine, Italy

Donghoon Choi
Yonsei University, Korea

Hsien-Li Kao
National Taiwan University Medical School & Hospital, Taiwan

Ralf Langhoff
St. Getrauden-Hospital, Vascular Center, Germany

Seung-Woon Rha
Cardiovascular Center, Korea University Guro Hospital, Korea

Dierk Scheinerl
Park Hospital Leipzig, Germany

Andrej Schmidt
Park Hospital Leipzig, Germany

Bryan Yan
The Chinese University of Hong Kong, Hong Kong

(Alphabetical order)

Course Objectives

At the CCT2013 held last October, the Peripheral intervention course offered the programs of live demonstrations and other activities, which were independent from the Coronary intervention programs. Fortunately, we had a large number of participants and had active discussions. This year, we will also hold the CCT Peripheral course for 3 days from October 30 through November 1. Just as last year, Kinzo Ueda, Hiroyoshi Yokoi, Shigeru Nakamura, Yusuke Miyashita, Yoshihisa Kinoshita, Hiroshi Ando and Keisuke Hirano have accepted to be the Peripheral Course Directors. We are preparing a variety of programs such as live demonstrations, symposium, Luncheon Seminars, Coffee Break Lectures, Case Competition, Poster Sessions and so on. At present, all sorts of new devices are quietly undergoing clinical studies in Japan, and many of these devices will be available in the practical scene in a few years. In the CCT2014 Peripheral, we also plan to have sessions, which will provide the latest information regarding these new devices.

In the EVT Live Case Transmissions, we have scheduled live broadcasts from two facilities including Toyohashi Heart Center on October 31 and Tokeidai Memorial Hospital on November 1. We very much hope that a high number of physicians will join the CCT2014 Peripheral course.

CCT2014 Representative Peripheral Course Director
Kazushi Urasawa

Thursday, October 30

Room 4

Case Competition

8:00-10:00 Case Competition 1

Chairs

Koji Hozawa, Yusuke Miyashita

Complex transcatheter aortic valve implantation (TAVI) in patient with various coexisting diseases

Hideyuki Kawashima (Teikyo University, Japan)

A case of Renal Artery Intervention for Fibromuscular Dysplasia assessed by Optical Frequency Domain Imaging

Koki Omi (Nihonkai General Hospital, Japan)

Pulmonary Artery Pseudoaneurysm Presented With Massive Hemoptysis Requiring Coiling Embolization

Helen Hoi Lam She (Princess Margaret Hospital, Hong Kong)

Experience of aggressive revascularization for the CLI patient of occluded AF,FF,FP bypass

Tomoyasu Sato

Percutaneous angioplasty of Paget-Schroetter syndrome caused by thrombotic occlusion of left subclavian vein

Satoru Yoneyama (Kanetsu Hospital, Japan)

Unbelievable coagulated thrombus hemostasis method for major perforation during endovascular therapy: report of three cases

Shinsuke Mori (Saiseikai Yokohama-City Eastern Hospital, Japan)

An EVT case of refractory deep vein thrombosis associated with venous compression by metastatic lymph node

Masashi Nakao (Tokyo Women's Medical University Hospital, Japan)

Pressure wire-guided balloon pulmonary angioplasty in chronic thromboembolic pulmonary hypertension

Hiroyuki Arashi (Tokyo Women's Medical University, Japan)

The original strategy of EVT for SFA using a sheath with side hole

Shinichiro Yamaguchi (Omihachiman Community Medical Center, Japan)

Bilateral Renal Sympathetic Denervation with Mild Stenosis in Left Renal Artery and Stented Right Renal Artery

Yae Matsuo (Gunma University Hospital, Japan)

Endovascular Management of post Cholecystectomy pseudo-aneurysm of Proper Hepatic artery

Anwar Ibrahim Khan (Oxford Hospital, India)

Bilateral renal artery occlusion -Response to Percutaneous Intervention-

Rajesh Vijayvergiya (Post Graduate Institute of Medical Education & Research, Chandigarh, India)

Award Ceremony

10:00-11:50 Case Competition 2

Chairs

Keisuke Hirano, Hiroaki Hirase

Transradial externalization of a stiff guide wire with rendezvous; A new technique to facilitate advancement of Inoue Balloon across the aortic valve in patients with aortic stenosis undergoing antegrade balloon aortic valvuloplasty

Hiroshi Kato (Fukui Kosei Hospital, Japan)

A case of occlusions of bilateral common iliac arteries with a stenosis of abdominal aorta treated with endovascular therapy

Kensuke Fujioka (Fukui Prefectural Hospital, Japan)

Novel minimal invasive approach to close abnormal fistulous connection between right pulmonary artery and left atrium using an atrial septal occluder device

Uditha Indika Hewarathna (Teaching Hospital Kandy, Sri Lanka)

A case of critical limb ischemia with heavily calcified popliteal lesion successfully treated using biopsy forceps

Takenobu Shimada (Kurashiki Central Hospital, Japan)

A case of bilateral CTO from superficial femoral artery to popliteal artery treated by IVUS guided wiring, Trans-collateral wiring, distal puncture at anterior tibial artery and guide wire rendez-vous method

Michinao Tan (Tokeidai Memorial Hospital, Japan)

New method for SFA long CTO -Intentional knuckle wire technique using IVUS-

Masayoshi Kimura (Japanese Red Cross Kyoto Daiichi Hospital, Japan)

Indigocarmine angiography in patient with critical limb ischemia

Akihiro Higashimori

Difference of Angioscopic Findings for In Stent Restenosis Lesion of Superficial Femoral Artery between Bare-Metal Stent and Drug-Eluting Stent: A Case Report

Akiko Idemoto (Osaka Rosai Hospital, Japan)

Transcatheter Repair of Aortic Perforation Complicating Transseptal Puncture

Ho-Ping Yu (Cheng-Hsin General Hospital, Taiwan, R.O.C.)

Blood - Thrombin Patch closure of Femoral Artery Perforation

Madhu Sreedharan (NIMS Heart Foundation, Trivandrum, India)

Repair of transection of left subclavian artery: a TAVI vascular access complication

Wei-Hsian Yin (Cheng-Hsin General Hospital, Taiwan, R.O.C.)

Award Ceremony

Luncheon Seminar

Japanese
only

12:00-13:00 **The failure teaches great success**
～トラブルケースに学ぶEVT! 失敗は成功のもと～

座長

浦澤 一史

コメンテーター

川崎 大三

平野 敬典

演者

加藤 拓 (公立南丹病院)

寺村 真範 (岡村記念病院)

上月 周

共催：ジョンソン・エンド・ジョンソン株式会社

14:00-15:45 **Complicated case meet the experts**

Japanese
only

座長

中村 茂

野崎 洋一

パネリスト

浦澤 一史

木下 順久

横井 良明

14:00 below the ankleで苦労した症例

坂元 博 (春日部中央総合病院)

14:20 A case of endovascular therapy we needed bail out during procedure with Crosser

本多 洋介 (済生会横浜市東部病院)

14:40 腸骨動脈破裂とそのBail-out

原口 拓也

15:00 オクルージョンバルーン付きガイディングシース (オブティモPPI) を用いた
ことで、逆行性解離が生じた一例

橋詰 直人 (信州大学医学部附属病院)

15:20 Subclavian artery rupture after Palmaz stent implantation

小林 智子

Coffee Break Lecture

Japanese
only

15:45-16:00 **New EVT-GW “Naveed”**

座長

中村 茂

演者

浦澤 一史

共催：テルモ株式会社

16:00-18:00 **All about stent graft**

Japanese
only

座長

大場 泰洋

川口 克廣

16:00 Powerlink

工藤 敏文

16:15 Zenith

東 隆

16:30 Endurant

田崎 淳一

16:45 Incraft

成田 裕司

17:00 Gore Excluder

吉鷹 秀範

17:15 Gore TAG

岡 克彦

17:30 Valiant

松田 均

Room 9

8:00-9:45 **Video Live 1**

座長

佐藤 勝彦
中村 茂

8:00 CAS

梅本 朋幸 (武蔵野赤十字病院)

8:25 鎖骨下

仲間 達也

8:50 急性動脈閉塞

山内 靖隆 (菊名記念病院)

9:15 腹部大動脈瘤のステントグラフト

川口 克廣

Japanese
only

10:00-11:50 **Video Live 2**

座長

木下 順久
佐藤 友保

10:00 iliac CTO

篠崎 法彦

10:25 SFA CTO

松井 朗裕 (春日部中央総合病院)

10:50 BK CTO

越田 亮司

11:15 BK CTO

朴澤 耕治

Japanese
only

Luncheon Seminar

Japanese
only

12:00-13:00 **Global vascular management
— 発展するendovascular therapy —**

座長

安藤 弘

循環器内科医が行う意義

山本 義人

放射線科医が行うEVTの現状

高山 勝年 (医真会八尾総合病院)

共催：日本メドトロニック株式会社

14:00-15:00 **How to session 1
Aorto-iliac intervention**

Japanese
only

座長

曾我 芳光
土谷 武嗣

14:00 35 knuckle wiring is the best strategy for iliac CTO

曾我 芳光

14:20 IVUS guide wiring is the best strategy for iliac CTO

平野 敬典

14:40 How to cross the wire for iliac CTO with fluoroscopy (Angiography guide)

土谷 武嗣

15:00-16:00 **How to session 2
Femoro-pop intervention1**

Japanese
only

座長

篠崎 法彦
中野 雅嗣

15:00 How to approach in EVT for SFA lesion

金子 喜仁

15:20 Which wire should be selected for SFA CTO lesion

宮本 明

15:40 How to bailout in SFA complications

越田 亮司

16:00-17:00 **How to session 3
Femoro-pop intervention2**

Japanese
only

座長

飯田 修

川崎 大三

16:00 What is the best strategy for non-stenting zone
(CFA to SFA proximal and SFA distal to popliteal)

仲間 達也

16:20 What is the best strategy for SFA in-stent re-occlusion

川崎 大三

16:40 What is the best strategy for SFA TASC type C, D

飯田 修

17:00-18:00 **How to session 4 BTK/BTA intervention**

Japanese
only

座長

安齋 均

飯田 修

17:00 Our recent endovascular strategy for BTK/BTA lesions

越田 亮司

17:15 The key to succeeding with BTK/BTA interventions

安藤 弘

17:30 What is the essential key to succeed BTK/BTA intervention?

山本 義人

17:45 Impact of the below-the-ankle intervention

仲間 達也

Exhibition Booth IV

Poster Session

10:00-11:30 **Poster 1**

Chairs

Tsuyoshi Goto

Yoshitane Seino

A Successful Endvascular Intervention for SFA-Long CTO using CROSSER

Tomofumi Mizuno (Fukuyama City Hospital, Japan)

Calcified SFA lesion that treated with CROSSER and step-by-step ballooning

Hiroaki Kobayashi (Kasukabe Chuo General Hospital, Japan)

The impact of change in minor amputation strategy for critical limb ischemia

Yosuke Honda (Saiseikai Yokohama-City Eastern Hospital, Japan)

Parallel stenting to an SFA lesion with complete in-stent restenosis

Shinya Hata (Teine Keijinkai Hospital, Japan)

The case of renal hyper perfusion injury following PTRS

Shouhei Kishi (Sakakibara Heart Institute, Japan)

A case of young woman who presented with bilateral renal artery stenosis

Yosuke Honda (Saiseikai Yokohama-City Eastern Hospital, Japan)

A case of SFA CTO treated with side hole sheath and transvenous IVUS

Naoki Koike (Kofu-Kyoritsu Hospital, Japan)

14:00-15:30 **Poster 2**

Chairs

Akihiro Nakamura

Yoichi Tatsukawa

Clinical outcome after MisagoTM nitinol stent implantation

Yuichiro Yamase (Tajimi Hospital, Japan)

Outcomes of Patients With Critical Limb Ischemia Who Undergo Routine
Coronary Angiography and Subsequent Percutaneous Coronary Intervention

Seung-Woon Rha

Middle-Term Clinical Outcome of Femoropopliteal Stenting with Drug-Eluting
Stents and Bare Metal Stents in Diabetic Patients.

Masakazu Tsutsumi (Saiseikai Yokohama-City Eastern Hospital, Japan)

Impact of the proper controlling of HbA1c for the lesion before treated with
bare metal stent in superficial femoral artery

Kenji Makino (Saiseikai Yokohama-City Eastern Hospital, Japan)

Clinical Outcomes of Drug-Eluting Balloon in Real-world Practice of
Femoropopliteal Intervention

Hsuan Li Huang (Taipei Tzuchi Hospital, Taiwan, R.O.C.)

Outcomes after endovascular therapy for chronic total occlusion of common
femoral artery.

Yasunari Sakamoto (Saiseikai Yokohama-City Eastern Hospital, Japan)

A case of DES implantation for recurrent in-stent occlusion in SFA

Atsushi Nakano (JCHO Sapporo Hokushin Hospital, Japan)

Friday, October 31

Themed Theater

EVT Live Case Transmission



Toyohashi Heart Center

Operators

Yoshihisa Kinoshita, Shigeru Nakamura, Hiroyoshi Yokoi

14:00-16:00 **EVT Live Case Transmission 1**

Chairs

Giancarlo Biamino, Andrej Schmidt, Yoshiaki Yokoi

Commentators

Donghoon Choi, Takuya Haraguchi, Keisuke Hirano, Masanori Inoue, Nobuhiko Ogata, Yoshimitsu Soga, Taketsugu Tsuchiya

Switcher

Tomoko Kobayashi

Flash presentation 1

0.018" knuckle wire technique for SFA-CTO

Yoshito Yamamoto

14:00-16:00 **Featured Live**

Flash presentation 2

Importance of using IVUS in EVT

Yusuke Miyashita

Co-sponsored by
TERUMO CORPORATION

16:00-18:00 **EVT Live Case Transmission 2**

Chairs

Hitoshi Anzai, Craig Walker

Commentators

Nobuhito Kaneko, Osami Kawarada, Daizo Kawasaki, Ralf Langhoff, Tatsuya Nakama, Seung-Woo Rha, Tomoyasu Sato, Bryan Yan

Switcher

Yuichi Ujije

Flash presentation 3

Rendez-vous technique for peripheral intervention

Tatsuya Nakama

Flash presentation 4

IVUS guided wiring: Tips and tricks

Daizo Kawasaki

17:00-18:00 **Featured Live**

Co-sponsored by
Medicon, Inc.

Special Program



18:00-19:30 **Big waves from LINC**

Chairs

Andrej Schmidt, Yoshiaki Yokoi

Up-dated techniques of EVT for lower limb arteries

Andrej Schmidt

Past, Today and Future of EVT

Giancarlo Biamino

Co-sponsored by
ASAHI INTECC CO., LTD.
Johnson & Johnson K.K.
TERUMO CORPORATION

Room 3

8:30-9:45 **Technical forum 1 CO2 angiography**

Japanese
only

座長

川崎 大三

越田 亮司

8:30 Result from a prospective multicenter trial of CO2 angiography registry

藤原 昌彦

8:45 Efficacy and safety of EVT using contrast medium and CO2 together

篠崎 法彦

9:00 Tips of CO2 angiography with new X-ray angiography system

越田 亮司

9:15 CO2 angiographyを安全に使いこなすためのTips and Tricks

川崎 大三

Coffee Break Lecture

Japanese
only

9:45-10:00 **SFA stent “Misago”**

座長
川崎 大三

演者
篠崎 法彦

共催：テルモ株式会社

Luncheon Seminar

Japanese
only

12:30-13:30 **Optimal endovascular strategies for iliac artery & SFA lesions**

座長
横井 良明

Iliac artery
川崎 大三

SFA lesions
藤原 昌彦

共催：ボストン・サイエンティフィック ジャパン株式会社

10:00-11:00 **Technical forum 2 Echo-guided wiring**

Japanese
only

座長
平野 敬典
宮本 明

10:00 Echo guided wiring (Kikuna style)
宮本 明

10:20 Echo guided wiring (Tobu style)
平野 敬典

10:40 How to set up echo machine and quality use of the vascular elastography
滝村 英幸

11:00-12:20 **Technical forum 3 Distal puncture
(in BTK intervention)**

座長
安藤 弘
浦澤 一史

11:00 My recent approach to distal puncture
山本 義人

11:15 Tibial puncture、最近の知見
土谷 武嗣

11:30 All about the distal puncture
安藤 弘

11:45 教育講演
Andrej Schmidt

14:00-15:00 **Technical forum 4 Direct SFA puncture**

Japanese
only

座長
井上 直人
浦澤 一史

14:00 Distal SFA puncture with 0.035 inch guide-wire
新谷 嘉章

14:12 腎機能障害がある際の工夫
宇都宮 誠

14:24 When do you do direct SFA puncture?
氏家 勇一

14:36 Distal punctureのメリット、デメリット
鈴木 健之

14:48 Direct SFA punctureの変遷
浦澤 一史

15:00-16:00 **How to use Crosser**

Japanese
only

座長
浦澤 一史
中村 正人

15:00 Break a deadlock by using Crosser
安藤 弘

15:20 How to use Crosser: a new application
浦澤 一史

15:40 Crosser 先行手技のコツ
中村 正人

16:00-17:00 **Carotid artery intervention**

座長

伊弉 裕二

16:00 Current status of CAS in Japan
(from cardiologist's point of view)

緒方 信彦

16:15 Current status of CAS in Taiwan
Hsien-Li Kao

16:30 Current status of CAS in Europe
Andrej Schmidt

17:00-18:00 **Renal artery intervention**

座長

宮下 裕介

横井 良明

17:00 最近の臨床研究を読み解く - 腎動脈形成術は不要か -
横井 良明

17:15 真の適応は 体表面エコーから
原田 敬

17:30 真の適応は FFRから
藤原 昌彦

17:45 遠位保護の必要性は
宮下 裕介

Japanese
only

Fireside Session

18:00-19:30 **エキスパートに学ぶEVT治療戦略**

座長

中村 正人

CASにおける合併症低減の工夫

篠崎 法彦

SFA CTOの治療戦略 (VOLCANO IVUS活用術)

川崎 大三

CTO-EVTにおけるIVUSを活用した治療戦略 (Iliac領域を中心として)

山本 義人

共催：ボルケーノ・ジャパン株式会社

Japanese
only

Promotion Bureau

Promotion Session

Japanese
only

15:00-16:00 **KANEKA young physicians session 2014
- Endovascular treatment my favorite tools -**

座長

井上 直人

演者

加藤 拓 (公立南丹病院)

禮浦 裕 (市立札幌病院)

守崎 勝悟 (福岡徳洲会病院)

中尾 優 (東京女子医科大学病院)

共催：株式会社カネカメディックス

Exhibition Booth IV

Poster Session

10:00-11:30 **Poster 3**

Chairs

Osami Kawarada, Takehiro Yamashita

A case of EVT using collateral from hypoplastic posterior tibial artery
Hiroshi Sakamoto (Kasukabe Chuo General Hospital, Japan)

Hematoma is formed time of EVT which is useful to Bailout by Covered(Niti)
STENT

Kimihiko Ishimura (Dokkyo Medical University Hospital, Japan)

A case of successful parallel wiring with Crusade for CTO of iliac artery
Michinao Tan (Tokeidai Memorial Hospital, Japan)

CLI-cases with effectiveness of not TCA (trans-collateral approach) but DP
(distal puncture)

Akhiro Matsui (Kasukabe Chuo General Hospital, Japan)

Successful EVT for SFA-CTO with IVUS knuckle technique by Eagle Eye
Platinum ST

Yusuke Iwasaki (Osaka General Medical Center, Japan)

Renal artery stenting with coronary intervention technique as anchor balloon
Su Hong Kim (Busan Veterans Hospital, Korea Veterans Health Service, Korea)

Successful Endovascular Therapy for Acute Deep Vein Thrombosis
Nobuhito Yagi (Okinawa Chubu Hospital, Japan)

14:30-16:00 **Poster 4**

Chair

Yuki Horita

A case of endovascular therapy for Lericq syndrome

Makoto Yamaura (Kizawa Memorial Hospital, Japan)

The differences in patient background between endovascular therapy and bypass surgery for claudicant

Hideaki Aihara (Tsukuba Medical Center Hospital, Japan)

Midterm results of endovascular treatment in patients with complicated type B aortic dissection and malperfusion syndrome

Han Cheol Lee (Pusan National University Hospital, Korea)

A case of dissection of the SMA treated by percutaneous stent deployment

Naoki Yoshioka (Tajimi Hospital, Japan)

Endovascular Therapy for Internal Iliac Artery Aneurysm: a case report

Shinsuke Mori (Saiseikai Yokohama-City Eastern Hospital, Japan)

Hemodynamic-depression in AS patient

Kei Kawai (Yokohamashintoshi Neurosurgical Hospital, Japan)

Bailout for difficulty of temporary IVC filter removal

Akhiro Matsui (Kasukabe Chuo General Hospital, Japan)

Saturday, November 1

Themed Theater

EVT Live Case Transmission



Tokeidai Memorial Hospital

Operators

Hiroshi Ando, Keisuke Hirano, Yusuke Miyashita, Kazushi Urasawa

8:30-10:00 EVT Live Case Transmission 3

Chairs

Giancarlo Biamino, Ralf Langhoff, Hiroyoshi Yokoi

Commentators

Donghoon Choi, Michiaki Higashitani, Akihiro Nakamura, Yuji Sakanoue, Yoshitane Seino, Yuta Terabe, Yuichi Ujiie, Craig Walker

Switcher

Makoto Utsunomiya

8:30-10:00 Featured Live

Co-sponsored by
Johnson & Johnson K.K.

8:30-10:00

Flash presentation 5

The role of cilostazol in EVT
Osamu Iida

Co-sponsored by
Otsuka Pharmaceutical Co., Ltd.

10:00-11:50 **EVT Live Case Transmission 4**

Chairs

Masato Nakamura, Seung-Woo Rha, Bryan Yan

Commentators

Atsushi Funatsu, Tsuyoshi Goto, Nobuhito Kaneko, Katsuhiko Kawaguchi, Osami Kawarada, Andrej Schmidt, Takehiro Yamashita

Switcher

Norihiko Shinozaki

10:00-10:20

Flash presentation 6

Zilver PTX Drug Eluting Stent Japan PMS 12 month results
Hiroyoshi Yokoi

Co-sponsored by
Cook Japan Incorporated

10:20-11:50 **Featured Live**

Flash presentation 7

First crossing balloon for BTK lesions, Coyote FC
Kazushi Urasawa

Co-sponsored by
Boston Scientific Japan K.K.

Luncheon Seminar

12:00-13:00 **The evolution of endovascular treatment
- Expected strategies and knowledge in the future -
~これから求められる治療と知識~**

座長

横井 良明/Yoshiaki Yokoi
横井 宏佳/Hiroyoshi Yokoi

これからの時代に求められる知識と治療戦略
Knowledge & treatment strategies in new EVT era
中村 正人/Masato Nakamura

The evolution of endovascular techniques
Andrej Achmidt

共催：大塚製薬株式会社/Otsuka Pharmaceutical Co., Ltd.
ジョンソン・エンド・ジョンソン株式会社/Johnson & Johnson K.K.



13:00-14:30 **EVT Live Case Transmission 5**

Chairs

Doghoon Choi, Yoshiaki Yokoi

Commentators

Hitoshi Anzai, Takashi Harada, Akihiro Higashimori, Susumu Matsuda, Yoichi Nozaki, Seung-Woon-Rha, Tomoyasu Sato, Kenji Suzuki

Switcher

Masatsugu Nakano

13:00-14:30 **Featured Live**

Flash presentation 8

Leading to the NEXT ! A new concept, ASAHI peripheral guidewire
Kazushi Urasawa

Co-sponsored by
ASAHI INTECC CO., LTD.

14:30-16:00 **EVT Live Case Transmission 6**

Chairs

Shinsuke Nanto, Andrej Schmidt, Craig Walker

Commentators

Ichiro Hamanaka, Koji Hozawa, Takuyuki Komoda, Ralf Langhoff, Tatsuya Nakama, Yoshiaki Shintani, Hideyuki Takimura, Bryan Yan

Switcher

Masahiko Fujihara

Flash presentation 9

Optimization of duplex ultrasound-guided wiring
Hideyuki Takimura

14:30-16:00 **Featured Live**

Flash presentation 10

SFA new product update
Craig Walker

Co-sponsored by
Abbott Vascular Japan Co., Ltd.

Room 3

8:30-9:30 **Venous intervention**

Japanese
only

座長

緒方 信彦

中村 茂

8:30 IVCフィルターへの適応と役割

山田 典一 (三重大学)

8:45 Iliac

船津 篤史

9:00 The initial and followed results of endovascular intervention therapy for central venous stenosis or occlusion with chronic hemodialysis patients

堀田 祐紀

9:15 DVT (Lower extremities)

孟 真

Coffee Break Lecture

Japanese
only

9:30-9:45 **回収可能型IVC Filterへの適応**

座長

山田 典一

演者

安齋 均

共催: Cook Japan株式会社

9:45-10:45 **Acute limb ischemia**

Japanese
only

座長

安齋 均

矢嶋 純二

9:45 Interventional cardiologists' approach for acute limb ischemia

松野 俊介 (心臓血管研究所付属病院)

10:00 The safety and efficacy of continuous local thrombolysis with pulse spray catheter to bail out of acute limb ischemia

山内 靖隆 (菊名記念病院)

10:15 A case of acute thrombotic occlusion combined with chronic lower limb ischemia - How should it be treated? -

浜中 一郎

10:30 Current status and future perspective of treatment for ALI; from EDO registry

安齋 均

10:45-11:50 **Deep impact of InPact-BTK Study**

座長

Ralf Langhoff

横井 良明

10:45 Still, I believe the efficacy of DCB for BTK lesions

鈴木 健之

11:05 Role of DCB in clinical trial and practice

飯田 修

11:25 Are DEB the right solution for complex BTK procedures?

Ralf Langhoff

Luncheon Seminar

Japanese
only

12:00-13:00 **Prominent TOKEIDAI style
~EVT治療における時計台スタイルでのMicro catheter
Prominentの活用~**

座長

中村 茂

演者

浦澤 一史

共催: 株式会社東海メディカルプロダクツ

CT Skill-up Seminar

*English Available

Date: Thursday, October 30 - Saturday, November 1
Venue: Kobe International Exhibition Hall 1, Exhibition
For: Medical, Co-medical

Co-sponsored by:
 Canon Lifecare Solutions Inc.
 GE Healthcare Japan, Ziosoft, Inc.

Course Director: Satoru Sumitsuji
Course Co-Directors: Seiko Ide (Osaka University, Japan),
 Ryosuke Kametani (Nagoya Tokushukai General Hospital, Japan),
 Tadashi Kuroda (Osaka Medical Center for Cancer and Cardiovascular Diseases, Japan),
 Masaaki Okutsu (Nozaki Tokushukai Hospital, Japan),
 Yoshihiro Takeda (Osaka Medical College, Japan),
 Akimitsu Tanaka (Nagoya Tokushukai General Hospital, Japan),
 Keita Yamasaki (Osaka University, Japan)

Over the past decade Cardiac CT has advanced to an effective tool for assessing coronary artery disease. With the ability of evaluating (1) coronary plaques characteristics, (2) severity and extent of calcified coronary artery segments and (3) coronary arteries beyond chronic total occlusions, Cardiac CT still holds enormous potential as a PCI supporting tool. While PCI success rates can be further improved, integrated CT information helps to stratify procedural risk and reduce complications. For this purpose, however, analyzing Cardiac CT by the PCI operator himself is essential.

The present course aims to introduce the novel, user-friendly "Sliding Slab MIP" method, and to demonstrate how to take full advantage of Cardiac CT imaging in your daily PCI cases. Please join us to learn and experience the potential of cardiac MDCT.

Since there is a limited capacity of 12 attendees per session, it is highly recommended that you register as early as possible.

We kindly invite you to bring your own case data in DICOM format (300-400 axial data set) for analysis during break time.

Fundamental Course For: Medical Co-medical

The basic operation and diagnostic methods of "Sliding Slab MIP" will be explained.

Advanced Course For: Medical

A seminar working with doctors who have already learned the basic operation of "Sliding Slab MIP". Discussions will be made according to your own analysis of the practical cases.

※ All Sessions will be held in Japanese. However, Q & A by English will be acceptable.

Dates	Session	Time	Language	Course	Capacity
Thursday, October 30	A	10:00-11:30	Japanese (English)	Fundamental	12
	B	14:00-15:30		Advanced	6
	C	16:00-17:30		Fundamental	12
Friday, October 31	D	10:00-11:30		Fundamental	12
	E	14:00-15:30		Advanced	6
	F	16:00-17:30		Fundamental	12
Saturday, November 1	G	10:00-11:30	Advanced	6	
	H	13:30-15:00	Fundamental	12	

Pre-registration is required for these sessions. On-site registration may still be possible depending on the seat availability.

Rotablator Mastership Program

*English Available

Date: Saturday, November 1
Venue: Portopia Hotel Main Building 2F, Room Nojigiku
For: Medical

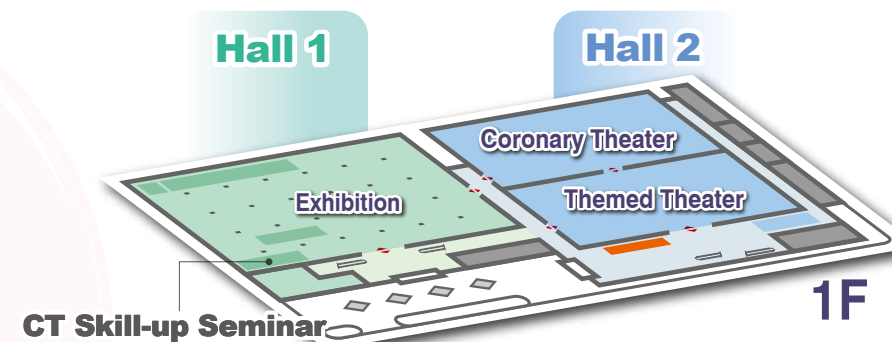
Sponsored by: Boston Scientific Japan K.K.

This training program consists of themed lectures from a team of highly experienced Rotablator operators, as well as case-centered discussions. The lectures provide guidance on applied techniques and troubleshooting, to help operators treat the more difficult cases encountered in actual clinical settings. Case discussions will serve to deepen participants' understanding as well as maximize the clinical essence of this mode of treatment. Actual Rotablaters and anatomical models will be provided for hands-on training.

Date	Session	Time	Theme	Chair	Case presenter	Capacity
Saturday, November 1	7	10:30-12:00	Rotablator Technique in Severe Calcified Lesion	Takashi Ashikaga	Hiroyuki Kyono (Teikyo University)	10

Pre-registration is required for these sessions. On-site registration may still be possible depending on the seat availability.

Kobe International Exhibition Hall



Portopia Hotel South Wing 1F



Main Bldg. 1F

Main Bldg. 2F Nojigiku: Rotablator Mastership Program

CT Skill-up Seminar

日程: 10月30日(木)~11月1日(土)
会場: 神戸国際展示場1号館展示会場
対象: メディカル・コメディカル

共催: キヤノンライフケアソリューションズ株式会社
ザイオソフト株式会社
GEヘルスケア・ジャパン株式会社

Course Director: 角辻 暁
Course Co-Directors: 井手 盛子 (大阪大学)、奥津 匡暁 (野崎徳洲会病院)、
亀谷 良介 (名古屋徳洲会総合病院)、黒田 忠 (大阪府立成人病センター)、
武田 義弘 (大阪医科大学)、田中 昭光 (名古屋徳洲会総合病院)、
山崎 慶太 (大阪大学)

心臓CTは冠動脈診断における日常的検査として広く認められるようになりました。病変の検出はもちろんのこと、PCIのストラテジーを構築するために有用な多くの画像情報もCTから得ることができます。ただし、そのためにはわれわれ冠動脈インターベンショナルリストが自ら画像解析をし、PCIに必要な情報を引き出さなくては真に有効利用することはできません。画像解析方法にも様々なものがありますが、われわれはPCIに最も反映しやすい方法としてSliding Slab MIP法を推奨しています。本コースではこのSliding Slab MIP法を用いた冠動脈診断を御紹介します。心臓CTの診断能力を身に付けることで格段に冠動脈画像解析の世界は広がります。そして今後、この能力は我々にとって大きな武器となるでしょう。是非、この機会に心臓CTをマスターしてください。

ご自身の施設で撮影されたCTデータを御持参いただければ講習の空き時間に、各社の解析ソフトを使って画像解析をすることができます。われわれがフルサポートいたします。データは再構成をおこなった最適フェーズaxial画像をDICOMデータでお持ちください。ご不明の場合はCTメーカー担当者へご確認いただくことをお勧めいたします。

●Fundamentalコース

対象: メディカル、コメディカル

Sliding Slab MIP法の操作方法および基本的なCT診断ポイントを解説します。

●Advancedコース

対象: メディカル

Sliding Slab MIPの基本操作を習得されている方を対象とします。アンギオおよびIVUSを提示して皆さんに実際の症例のCT診断をしていただきます。基本的にはディスカッション形式で行います。

今回はキヤノンライフケアソリューションズ、GEヘルスケア・ジャパン、ザイオソフトの3社にご協力いただき各社のワークステーションを準備しております。台数に限りがございますのでお早めにお申し込みください。定員に満たない場合は当日、会場での参加受付も行ってあります。立ち見に関してはスペースの許す限り制限はありません。

日付	セッション	時間	コース	定員
10月30日(木)	A	10:00-11:30	Fundamental	12名
	B	14:00-15:30	Advanced	6名
	C	16:00-17:30	Fundamental	12名
10月31日(金)	D	10:00-11:30	Fundamental	12名
	E	14:00-15:30	Advanced	6名
	F	16:00-17:30	Fundamental	12名
11月1日(土)	G	10:00-11:30	Advanced	6名
	H	13:30-15:00	Fundamental	12名

事前申込制ですが、当日会場に空席がございます場合には、ご参加いただくことが可能です。

Rotablator Mastership Program

Japanese only

日程: 10月30日(木)~11月1日(土) 共催: ボストンサイエンティフィック ジャパン株式会社
会場: 神戸ポートピアホテル本館2F のじぎく
対象: メディカル

ロータブレーターの手技に熟練したエキスパート陣によるテーマに則したレクチャーと、症例提示ディスカッションによるトレーニングプログラムです。レクチャーは応用的なテクニックやトラブルシューティングなど、より難易度の高い実臨床での手技に役立つ内容となっています。また、症例のディスカッションを通してインテリジェンスを深め、臨床上のエッセンスを極大化していきます。当日はハンズオン用にロータブレーター実機と人体模型を用意します。

日付	セッション	時間	テーマ	座長/講師	ケースプレゼンター
10月30日(木)	1	10:30-12:00	症例タイプ別に考える安全性重視の治療戦略 -初心者向け-	福原 怜 (兵庫県立尼崎病院)	松尾 浩志
	2	14:00-15:30	知っておくと便利な手技の工夫とテクニック -基礎から特殊病変まで-	岡村 篤徳	本山 敦士 (金沢医科大学病院)
	3	16:00-17:30	Optimal Rotablator Strategy and Technique in Complex Lesion	松村 昭彦	鹿島 由史 (札幌心臓血管クリニック)
10月31日(金)	4	10:30-12:00	合併症を避けるための Tips & Tricks -Slow Intermittent Ablation-	柴田 剛徳	岩間 眞 (岐阜県総合医療センター)
	5	14:00-15:30	ロータブレーターを有効かつ安全に最大限活用する	濱崎 裕司	川尻 健司
	6	16:00-17:30	How to use Rotablator™ for complex bifurcation lesions	山下 武廣	鴨井 大典 (名古屋共立病院)
11月1日(土)	7	10:30-12:00	Rotablator Technique in Severe Calcified Lesion English Session	足利 貴志	興野 寛幸 (帝京大学医学部附属病院)

事前申込制ですが、当日会場に空席がございます場合には、ご参加いただくことが可能です。

OCT/OFDI Training Center

Japanese
only

日程: 10月30日(木)~11月1日(土)
会場: 神戸国際展示場2号館3階 3B
対象: メディカル・コメディカル

共催: セント・ジュード・メディカル株式会社
テルモ株式会社

●OCTコース[コメディカル] 1, 2

対象:コメディカル
講師:メディカル

FD-OCTの基礎と実臨床での有用性を学ぶことが出来るコースです。手技のコツや注意点・画像の読み方といったカテ室でコメディカルに求められる知識やPCIにおけるOCTの活用方法について、OPTISを使用した症例提示を交えて経験豊富なコメディカルの講師に分かり易く解説して頂きます。

●OCTコース[メディカル]

対象:メディカル/コメディカル
講師:メディカル

OCTのエビデンスや実臨床における様々な症例におけるOCTの有用性を学ぶことが出来るコースです。症例提示による診断や治療戦略へのOCTの活用方法や、コアラボでのOCT画像の解析方法などに関して経験豊富な講師に解説して頂きます。

日付	時間	対象	コース	講師
10月30日(木)	11:00-12:00	コメディカル	OCTコース [コメディカル]-1	白樫 貴宏 (大阪府済生会中津病院)
10月31日(金)	14:00-15:00	メディカル コメディカル	OCTコース [メディカル]	小西 明英 (神戸大学)
11月1日(土)	10:00-11:00	コメディカル	OCTコース [コメディカル]-2	黒川 宗雄 (奈良県立医科大学)

事前申込制ですが、当日会場に空席がございます場合には、ご参加いただくことが可能です。

●OFDIコース[治療戦略コース]

対象:メディカル/コメディカル
講師:メディカル

OFDIの原理・臨床使用におけるOFDIの有用性についての講義や、実際のOFDIのguided PCIの症例を提示いただきながら参加者の皆様に議論をする場を「OFDI治療戦略コース」とさせていただきます。
冠動脈内診断指標の一つとして新たに登場したOFDIのパフォーマンスや様々な可能性について参加者の皆様に検証していきたくと思います。

●OFDIコース[メカニカルコース]

対象:メディカル/コメディカル
講師:コメディカル

冠動脈治療に求められる画像診断の内容から、OFDIの基礎や画像処理やその解析、装置の特徴や使い方について広く学ぶ事が出来る場を「OFDIメカニカルコース」とさせていただきます。画像診断やデータ処理含め、装置関連の内容が中心のプログラムとなります。シミュレーターを使って、操作の体験が出来るプログラムも準備しております。奮ってご参加下さいませようお願い申し上げます。

日付	時間	対象	コース	講師
10月30日(木)	14:00-15:30	メディカル コメディカル	OFDI 治療戦略コース	名越 良治 (大阪府済生会中津病院)
10月31日(金)	10:00-11:30	メディカル コメディカル	OFDI 治療戦略コース	野崎 洋一
11月1日(土)	14:00-15:30	メディカル コメディカル	OFDI メカニカルコース	伊藤 朋晃 (小倉記念病院)

事前申込制ですが、当日会場に空席がございます場合には、ご参加いただくことが可能です。

IVUS Learning Center

Japanese only

日程: 10月30日(木)~11月1日(土)
 会場: 神戸国際展示場1号館展示会場
 対象: メディカル・コメディカル

共催: 血管内イメージング研究会
 ポストン・サイエンティフィック ジャパン株式会社

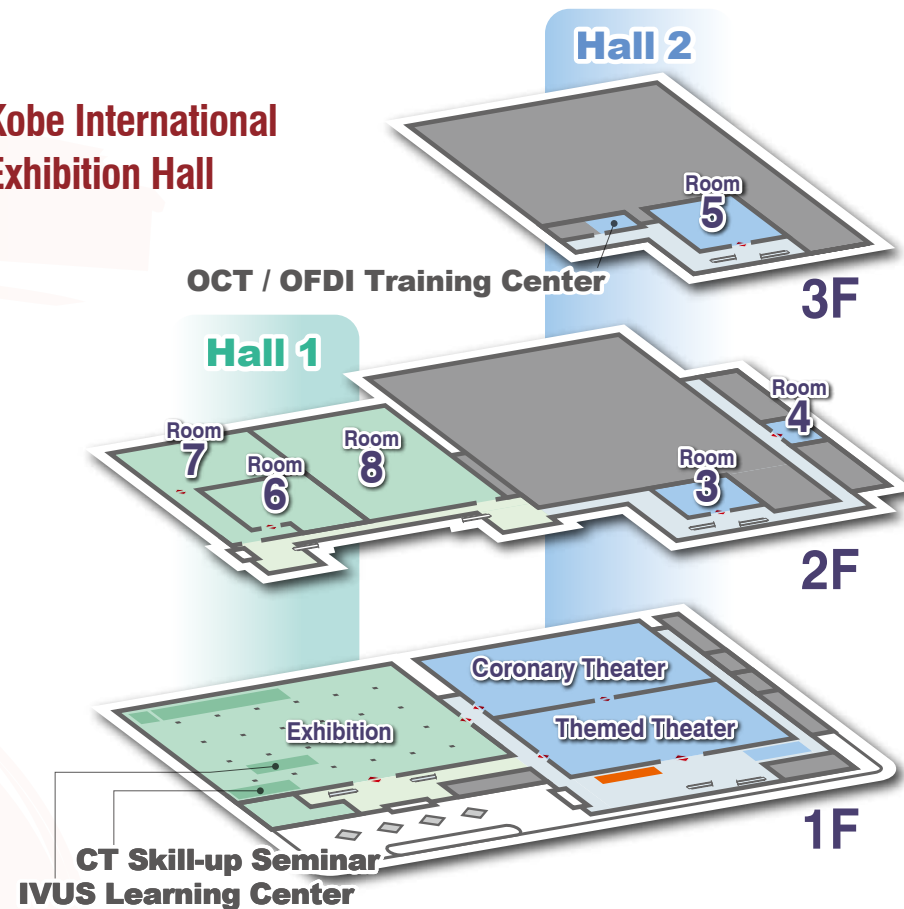
Small Groupe形式のレクチャーを行います。

- **Standardコース:** 基礎的な画像理解、計測方法の講義
- **Advanceコース:** IVUS の情報をPCI 戦略に応用

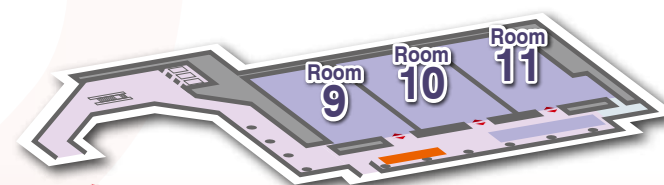
日付	セッション	時間	コース	
10月30日 (木)	Session A	A-1	14:00-15:00	Standard
		A-2	16:00-17:00	Advance
10月31日 (金)	Session B	B-1	11:00-12:00	Standard
		B-2	14:00-15:00	Advance
11月1日 (土)	Session C	C-1	9:00-10:00	Standard
		C-2	11:00-12:00	Advance

事前申込制ですが、当日会場に空席がございます場合には、ご参加いただくことが可能です。

Kobe International Exhibition Hall



Portopia Hotel South Wing 1F



Main Bldg. 1F

Main Bldg. 2F Nojigiku: Rotablator Mastership Program

CCT2014 Live Case Transmission Staff

Saitama Sekishinkai Hospital

Kotaro Hasegawa
Shinpei Ike
Hirokazu Kumada
Tomokatsu Satomura
Daisuke Shimizu
Mieko Ito
Naomi Hagimoto
Maiko Toma

Rakuwakai Marutamachi Hospital

Naofumi Oyamada
Tetsuzo Kanemori
Hiroaki Fujie
Takeya Minami
Nana Shimogaki
Chiharu Ueda
Kenichi Miyamoto
Kaori Hadano

Asan Medical Center, Korea

Young-Hak Kim
Jung-Min Ahn
Sung-Han Yoon

Higashi Takarazuka Satoh Hospital

Shin Takiuchi
Katsuaki Asano
Motoaki Ibuki
Katsuyuki Hasegawa
Shinya Nagayama
Toshikazu Kashiyama
Daisuke Shishikura
Kasumi Ishibuchi
Akiko Fujino

Tokeidai Memorial Hospital

Katsuhiko Sato
Ryoji Koshida
Michinao Tan
Yuya Nakagawa
Takuya Haraguchi

Toyohashi Heart Center

Tomohiko Teramoto
Satoru Tohara
Maoto Habara
Atsuko Kodaka
Masanori Yamamoto
Kaori Nakagawa
Taku Ichihashi
Shuichi Ishiduka
Hirotomo Sato
Yusuke Ochiumi
Masashi Yokoi
Toshitsugu Kuchinomachi
Keisuke Irokawa
Kazuo Shimizu
Megumi Nagata

The Sakakibara Heart Institute of Okayama

Kota Suzuki
Kazuki Kihara
Satoko Ishii
Kazuyuki Nagata
Kosuke Nakajima
Kana Yoshitomi
Daisuke Endo

Nagoya Daiichi Red Cross Hospital

Toshiaki Ito
Yasunari Hayashi
Junji Yanagisawa
Tomotaka Kitagawa
Takashi Kitao
Akitomo Hachisuka
Masahiro Hiraki

Venue

Tatsuya Ito (Nagoya Heart Center)
Jun Kikuchi (Gifu Heart Center)
Masashi Kimura (Seno Cardiovascular Surgery)
Osamu Matsuda (Nagoya Heart Center)
Hirotomo Sato (Toyohashi Heart Center)
Tomohiko Teramoto (Toyohashi Heart Center)
Masashi Yokoi (Toyohashi Heart Center)

We, the CCT Directors, would like to say special thanks to all the staff of above sites for contributing fantastic live demonstrations in Kobe.

Acknowledgements

CCT would like to express gratitude to the following partners.



Diamond Supporters

Boston Scientific Japan K.K.
Abbott Vascular Japan Co., Ltd.
TERUMO CORPORATION

Gold Supporters

Medtronic Japan Co., Ltd.
ASAHI INTECC CO.,LTD.
DAIICHI SANKYO CO.,LTD.
GOODMAN CO., LTD.
NIPRO CORPORATION
TOSHIBA MEDICAL SYSTEMS
CORPORATION

Bronze Supporters

Japan Lifeline Co., Ltd.
MSD K.K.
OrbusNeich Medical K.K.
AstraZeneca K.K.
KANEKA MEDIX CORPORATION
Takeda Pharmaceutical Company Limited.
Edwards Lifesciences Ltd.
Sanofi K.K.
FUKUDA DENSHI CO., LTD.
Pfizer Japan Inc.
Your Health Care Co., Ltd.
JMS Co. Ltd.

Silver Supporters

St. Jude Medical Japan Co., Ltd.
Volcano Japan Co., Ltd.
Johnson & Johnson K.K.
SHIMADZU CORPORATION

Medicon, Inc.
Tokai Medical Products, Inc.
Biosensors Japan Co. Ltd.
Philips Electronics Japan, Ltd.
COSMOTEC Co., Ltd.
CSL Behring K.K.
Century Medical, Inc.
HEIWA BUSSAN CO., LTD.
DVx Inc.
Novartis Pharma K.K.
Biotronic Japan
Cook Japan Incorporated



Bronze Supporters

SHEEN MAN CO., LTD.
Otsuka Pharmaceutical Co., Ltd.
Nihon Medrad K.K.
Nexis Co., Ltd.
Photron Medical Imaging Inc.
MEDIKIT Co., Ltd.
Mihama Medical, Inc.
Technowood
Siemens Japan K.K.
MAQUET Japan K.K.

WIN INTERNATIONAL CO.,LTD.
Covidien Japan Inc.
KOWA PHARMACEUTICAL COMPANY LTD.
Astellas Pharma Inc.
ZEON MEDICAL INC.
Teijin Pharma Limited.
Bayer Yakuhin, Ltd.
MOCHIDA PHARMACEUTICAL CO., LTD.
CENTRAL UNI CO., LTD.



Special thanks to

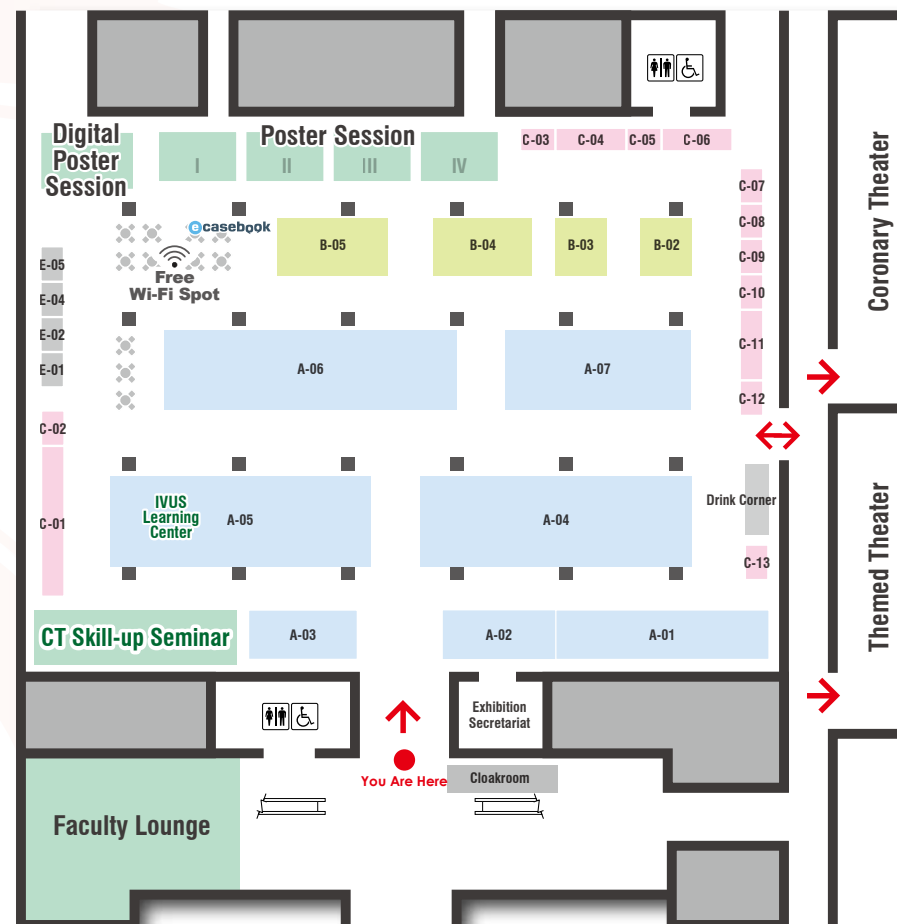
CARDIOVASCULAR SUMMIT-TCTAP, Korea
China Interventional Therapeutics (CIT), People's Republic of China
ENCORE SEOUL, Korea
India Live, India
Japanese Bifurcation Club
J-WINC
National Interventional Council (NIC), India
SLENDER CLUB JAPAN
Taiwan Transcatheter Therapeutics (TTT), Taiwan, R.O.C.
Tokyo Percutaneous Cardiovascular Intervention Conference (TOPIC)
The Federation of Pharmaceutical Manufacturers' Association of JAPAN

Live Case Transmission (Special Focus Live, Featured Live, Petit Focus Live) co-sponsored companies
Abbott Vascular Japan Co., Ltd., ASAHI INTECC CO., LTD., Boston Scientific Japan K.K.,
DAIICHI SANKYO CO.,LTD., Johnson & Johnson K.K., Medicon, Inc., TERUMO CORPORATION,
TOSHIBA MEDICAL SYSTEMS CORPORATION

Exhibition Hall Map

Booth No. Exhibitors

A-01	日本メドトロニック株式会社	Medtronic Japan Co., Ltd.
A-02	オーバスネイチメディカル株式会社	OrbusNeich Medical K.K.
A-03	株式会社島津製作所	SHIMADZU CORPORATION
A-04	ニプロ株式会社 株式会社グッドマン	NIPRO CORPORATION GOODMAN CO.,LTD.
A-05	ボストン・サイエンティフィック ジャパン株式会社	Boston Scientific Japan K.K.
A-06	テルモ株式会社	TERUMO CORPORATION
A-07	アボット バスキュラー ジャパン株式会社	Abbott Vascular Japan Co., Ltd.
B-02	東芝メディカルシステムズ株式会社	TOSHIBA MEDICAL SYSTEMS CORPORATION
B-03	セント・ジュード・メディカル株式会社	St. Jude Medical Japan Co., Ltd.
B-04	ボルケーノ・ジャパン株式会社	Volcano Japan Co.,Ltd.
B-05	朝日インテック株式会社	ASAHI INTECC CO., LTD.
C-01	フクダ電子株式会社	FUKUDA DENSHI CO., LTD.
C-02	メディキット株式会社	MEDIKIT Co., Ltd.
C-03	株式会社東海メディカルプロダクツ	Tokai Medical Products, Inc.
C-04	ジョンソン・エンド・ジョンソン株式会社	Johnson & Johnson K.K.
C-05	日本バイオセンサーズ株式会社	Biosensors Japan Co., Ltd.
C-06	株式会社カネカメディックス	KANEKA MEDIX CORPORATION
C-07	株式会社ネクシス	Nexis Co., Ltd.
C-08	日本メドラッド株式会社	Nihon Medrad K.K.
C-09	ディーブイエックス株式会社	DVx Inc.
C-10	フォトロン メディカル イメージング株式会社	Photron Medical Imaging Inc.
C-11	株式会社フィリップスエレクトロニクスジャパン	Philips Electronics Japan, Ltd.
C-12	株式会社ミハマメディカル	Mihama Medical, Inc.
C-13	シーマン株式会社	SHEEN MAN CO., LTD.
E-01	TCTAP 2015	
E-02	Taiwan Transcatheter Therapeutics (TTT)	
E-04	TOPIC	
E-05	SLENDER CLUB JAPAN	



Supervisory Directors

Yasushi Asakura

Kasai Shoikai Hospital

Tomoaki Hinohara

Sequoia Hospital

Keiichi Igarashi

JCHO Hokkaido Hospital

Osamu Katoh

Eisho Kyo

Kusatsu Heart Center

Satoru Otsuji

Higashi Takarazuka Satoh Hospital

Takahiko Suzuki

Toyohashi Heart Center

Etsuo Tsuchikane

Toyohashi Heart Center

Kinzo Ueda

Rakuwakai Marutamachi Hospital

Kazushi Urasawa

Tokaidai Memorial Hospital

Masahisa Yamane

Saitama Sekishinkai Hospital



CCT 2015

Complex Cardiovascular Therapeutics 2015

Dates

Oct. 29 Thu. - **31** Sat., 2015

Venues

Kobe International Exhibition Hall
Portopia Hotel, Kobe, Japan

CCT Administration Office

1-1-5-2E, Maedaminami-machi, Toyohashi, Aichi 440-0851, Japan

TEL +81-(0)532-57-1275 FAX +81-(0)532-52-2883 E-mail secretariat@cct.gr.jp