

The 26th Seminar of Angioplasty of Chronic Total Occlusions

CTO Club


[Dates]

June 26 Fri. – 27 Sat., 2026

[Venue]

WINC AICHI, Nagoya, Japan

Final

Web URL • <https://cct.gr.jp/ctoclub/> Find us on 

Facebook • <https://www.facebook.com/profile.php?id=100064156205483>

Supported by Complex Cardiovascular Therapeutics



Directors

Course Directors

Maoto Habara
Toyohashi Heart Center

Yuji Hamazaki
Ootakanomori Hospital

Michiya Kageyama
Nasu Red Cross Hospital

Yoshifumi Kashima
Oita Cardiovascular Hospital

Hiomasa Katoh
Fukui Prefectural Hospital

Shunsuke Matsuno
The Cardiovascular Institute

Wataru Nagamatsu
Hokusetsu General Hospital

Kenya Nasu
Mie Heart Center

Yuji Oikawa
The Cardiovascular Institute

Atsunori Okamura
Sakurabashi Watanabe Advanced Healthcare Hospital

Kenichiro Shimoji
Saiseikai Utsunomiya Hospital

Hiroyuki Tanaka
Kurashiki Central Hospital

Takafumi Tsuji
Kusatsu Heart Center

Junji Yajima
The Cardiovascular Institute

Ryohei Yoshikawa
Sanda Saiseikai Hospital

International Course Directors

Emmanouil Brilakis
Minneapolis Heart Institute [USA]

Jiyan Chen
Guangdong Provincial People's Hospital,
Institute of Cardiovascular Diseases
[People's Republic of China]

Scott Harding
Wellington Hospital [New Zealand]

Paul Hsien-Li Kao
National Taiwan University Medical School
& Hospital [Taiwan, R.O.C.]

Kambis Mashayekhi
Heartcenter Lahr [Germany]

Eugene Brian Wu
Prince of Wales Hospital [Hong Kong]

Honorary Co-directors

Yasushi Asakura
Aqua Rehabilitation Hospital

Yasumi Igarashi
Sapporo-Kosei General Hospital

Osamu Katoh

Eisho Kyo
Kusatsu Heart Center

Masahiko Ochiai
Showa Medical University Northern
Yokohama Hospital

Satoru Otsuji
Higashi Takarazuka Satoh Hospital

Takahiko Suzuki
Toyohashi Heart Center

Etsuo Tsuchikane
Toyohashi Heart Center

Kinzo Ueda
Medical Corporation Foundation Tokureikai

Masahisa Yamane
Saitama Sekishinkai Hospital

Greetings from the 26th CTO Club

Percutaneous coronary intervention (PCI) for chronic total occlusion (CTO) lesions has shown improved clinical outcomes with advances in devices and techniques. However, particularly in highly complex cases, achieving an optimal balance between safety, procedural success, and efficiency - including cost and procedural time - remains a critical challenge. Improving the quality of CTO PCI requires a systematic understanding of the entire treatment process, including treatment strategy planning based on preprocedural assessment, intra-procedural decision-making and technique switching, and complication avoidance. In particular, the rationale behind intra-procedural decisions and strategy modifications is difficult to convey adequately through lectures or recorded videos alone.

At the CTO Club, we place a strong emphasis on live demonstrations of high-complexity CTO cases, through which the operator's thought process is shared in real time. By visualizing how treatment strategies are developed, why specific techniques are selected, and when key decisions are made, we aim to provide highly reproducible educational opportunities. In addition, we will further discuss the important future challenge of standardizing treatment strategies and procedural techniques.

We cordially invite all physicians involved in CTO PCI to join us in Nagoya and participate in these discussions of high educational value that directly translate into daily clinical practice.

Wataru Nagamatsu, M.D.

The 26th CTO Club Representative Course Director

General Information

Registration

[Pre-registration]

Monday, March 9 - Friday, June 12

[Regular Registration]

Saturday, June 13 - Saturday, June 27

Please access the below webpage.

<https://cct.gr.jp/ctoclub/index.html#x06>



CTO Live Case Transmissions webcast is available!

By paying a special price of 3,000JPY,
you can watch the live sessions online on the day (JST).

Opening Hours

[Registration]

Registration Desk, 5F

Friday June 26 7:40-17:00

Saturday June 27 7:40-15:00

[Exhibition]

Exhibition Room, 5F

Friday June 26 9:00-18:00

Saturday June 27 9:00-15:00

[Poster Posting]

Exhibition Room, 5F

Friday June 26 12:00-18:00

Saturday June 27 9:00-15:30

Language

Official Language: English

Simultaneous interpretation is not available.

Live Case Viewer

The 26th CTO Club participants can view live case data and strategies of operators on “Live Case Viewer” website when the data is ready.

Food and Beverages

Breakfast is provided in “Scientific Program” and “Educational Program Part 2”.

Every Luncheon Seminar provides lunch boxes for attendees.

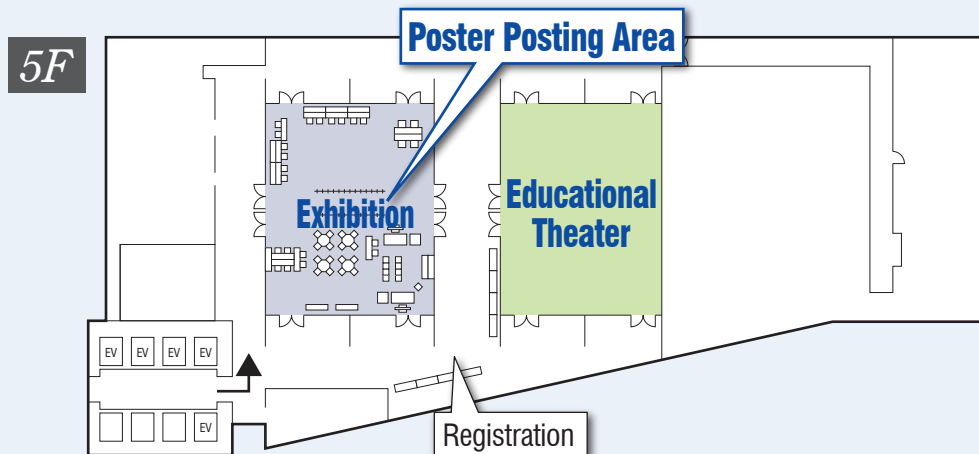
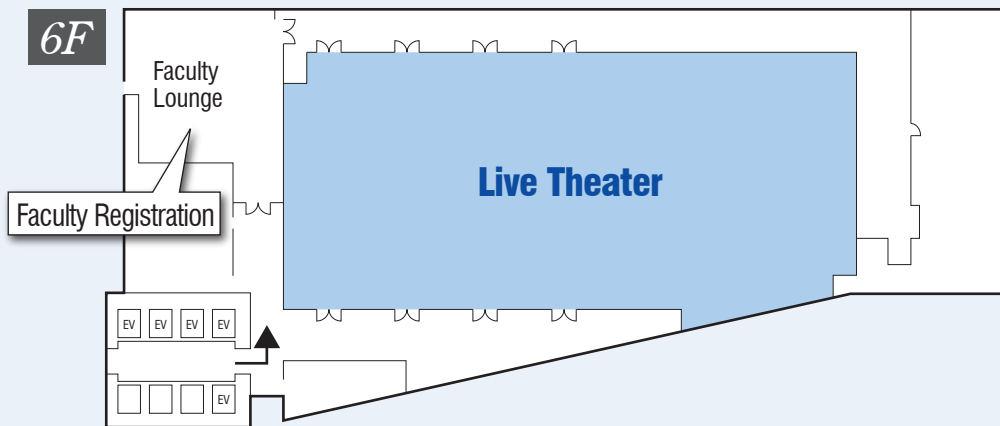
Live Case Transmissions Webcast

All sessions at Live Theater will be broadcasted live online during the 26th CTO Club.

The webcast URL will be available on “My Page” of the registration website (Heartmeetings+) on the day.

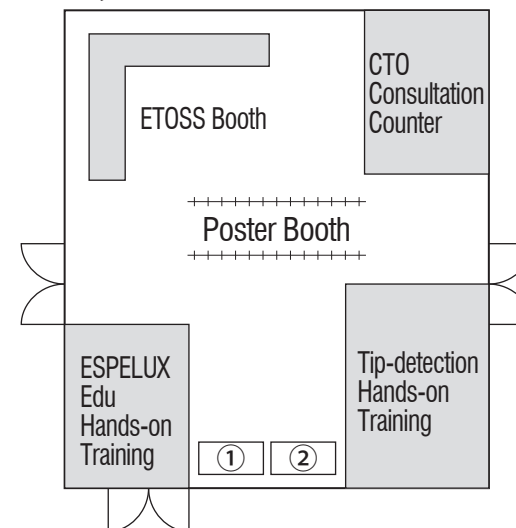
There will be no video on-demand broadcast after the 26th CTO Club.

Floor Plan



Exhibition

5F, WINC Aichi



June 26 9:00-18:00

June 27 9:00-15:00

[Exhibition Booth]

- ① Orbusneich Medical K.K.
- ② Philips Japan, Ltd.

Program at a glance

Official Language: English
 Simultaneous interpretation is not available.
 All sessions at Live Theater will be broadcasted live online.
 🇯🇵 Session in Japanese

Friday, June 26

	7:50	8:00	9:00	10:00	11:00	12:00	13:00	14:00	15:00	16:00	17:00	18:00	19:00
Live Theater		Scientific Program P.5	CTO Live Case Transmission Sakurabashi Watanabe Advanced Healthcare Hospital LIVE P.5			Luncheon Seminar: Learn Again the Penetration Plane Method with Global Leaders ASAHI INTECC CO., LTD. P.5		Educational Program 1. Step-by-Step CTO PCI P.6	CTO Live Case Transmission The Cardiovascular Institute LIVE P.6		CTO Live Case Transmission MLCTO Centre Cardio-Thoracique, Monaco P.6		
Educational Theater			International Joint Session IJCTO@CTO Club Canon Inc. P.7	International Joint Session KCTO@CTO Club P.7		Luncheon Seminar: Unlocking the Power of the MUSOU Dual Lumen Catheter: Advanced Techniques by CTO Experts Kaneka Medix Corporation P.7			International Joint Session APCTO@CTO Club - ZOLUTION Wiring: Concept, Precision, and Succession P.8				
Hands-on Sessions @Exhibition*								ESPELUX Edu Hands-on Training P.12		ESPELUX Edu Hands-on Training P.12	CTO Consultation Counter P.12		
								Tip-detection Hands-on Training P.13					

*See p.12-13 for Hands-on Sessions application & details.

Saturday, June 27

	7:50	8:00	9:00	10:00	11:00	12:00	13:00	14:00	15:00	16:00	17:00	18:00	19:00
Live Theater		Educational Program 2. When CTO PCI Gets Difficult P.9	CTO Live Case Transmission Toyoashi Heart Center LIVE P.9			Luncheon Seminar: Tip Detection Method in CTO PCI TERUMO Corporation P.9		CTO Live Transmission Saiseikai Utsunomiya Hospital LIVE P.10					
Educational Theater				Case Competition: My Most Memorable and/or Most Educational CTO Case P.11		Luncheon Seminar: How to treat the various complex lesions in daily practice in the Asia-Pacific Kaneka Medix Corporation P.11							
Hands-on Sessions @Exhibition*			CTO Consultation Counter P.12										
			ESPELUX Edu Hands-on Training P.12										
			Tip-detection Hands-on Training P.13						Tip-detection Hands-on Training P.13				

*See p.12-13 for Hands-on Sessions application & details.

7:50-8:20 **Scientific Program**

Stay at the cutting edge of CTO PCI in this evidence-driven session! From a comprehensive year-in-review to the evolving role of cardiac CT and the expanding possibilities of drug-coated balloons, each talk distills the latest data into practical insights. Join us to refine your strategy, challenge your current practice, and see where the field is heading next.

Chairs: Maoto Habara, Byeong-Keuk Kim, Shunsuke Matsuno

What Did We Learn? CTO PCI Year in Review

Seung-Whan Lee

Seeing the Unseen: Cardiac CT in CTO PCI

Maksymilian Opolski

Less Metal, More Options: DCB in CTO PCI

Scott Harding

CTO Live Case Transmission

In the 26th CTO Club, our operators will demonstrate some exciting approaches by outlining every aspect of strategy and procedural detail from beginning to end. Please attend to learn tips and tricks from the experts!

Sakurabashi Watanabe Advanced Healthcare Hospital

Operators: Wataru Nagamatsu, Atsunori Okamura, Ryohei Yoshikawa

Imaging Commentators: Satoshi Suzuki, Tetsuya Yamamoto (Kobe University Graduate School of Medicine, Japan)

8:30-10:10 **Live Case Transmission 1**

*Chairs: Tse-Min Lu
Shunsuke Matsuno
Takafumi Tsuji*

*Commentators: Chee Yang Chin, Rustem Dautov, Rei Fukuhara
Katsuyuki Hasegawa, Dong-Kie Kim, Shunsuke Kitani
Hiroshi Nakagata, Gavin Ng, Takeshi Serikawa*

Focus Live

Co-sponsored by: TERUMO Corporation

10:10-11:50 **Live Case Transmission 2**

*Chairs: Maoto Habara
Yoshifumi Kashima
Sidney Tsz Ho Lo*

*Supervisor: Takahiko Suzuki
Commentators: Cheng-An Chiu, Thunnop Chotivanawan, Fumitaka Hosaka
Masato Ishikawa, Takanobu Mitarai, Masaharu Okada
Maksymilian Opolski, Yoshinori Shimooka, James Xu*

Focus Live

Co-sponsored by: Abbott Medical Japan LLC

12:00-13:00 **Luncheon Seminar: Learn Again the Penetration Plane Method with Global Leaders**

*Chairs: Kenya Nasu
Byeong-Keuk Kim*

*Commentators: Soo Teik Lim
Lei Ge
Shunsuke Matsuno*

Penetration Plane Method
Maksymilian Opolski

ESPELUX Edu and V2 Overview
Maoto Habara

Clinical Applications of the Penetration Plane Method & ESPELUX Edu V2
Kenichiro Shimoji

Co-sponsored by: ASAHI INTECC CO., LTD.

13:10-14:10 **Educational Program 1. Step-by-Step CTO PCI: From Planning to Wire Crossing**

Educational Program 1 walks you step-by-step through the CTO PCI journey—from meticulous pre-procedural planning to wire crossing strategies—covering essential techniques such as antegrade wire escalation, navigating the extraplaque space, and selecting optimal collateral pathways. Build a structured, reproducible approach you can apply in every case.

Chairs: Yu-Ho Chan, Rei Fukuhara, Maoto Habara

Before the First Wire: Planning CTO PCI

Kenichiro Shimoji

Back to Basics: Antegrade Wire Escalation and De-Escalation

Koshi Matsuo

Lost in the Extraplaque Space: What's Next?

Hiromasa Katoh

Finding the Way: Selecting and Crossing Collaterals

Yoshiaki Ito

When the Wires Meet: CTO Crossing Strategies

Shunsuke Matsuno

CTO Live Case Transmission

In the 26th CTO Club, our operators will demonstrate some exciting approaches by outlining every aspect of strategy and procedural detail from beginning to end. Please attend to learn tips and tricks from the experts!

The Cardiovascular Institute

Operators: Michiya Kageyama, Yuji Oikawa

Imaging Commentator: Hideto Sangen

14:20-15:40 **Live Case Transmission 3**

Chairs: Seung-Whan Lee

Kenya Nasu

Hiroyuki Tanaka

Supervisor: V. Surya Prakasa Rao

Commentators: Anek Kanoksilp, Norihiro Kobayashi, Tomoko Kobayashi

Yuichi Kobori, Nae Hee Lee, Mitsunori Mutou

Avadhesh Saraswat, Yusuke Tanigaito, Cheng Chun Wei

Chris Zambakides

Focus Live

Co-sponsored by: Abbott Medical Japan LLC

Petit Focus Live

Co-sponsored by: CANON MEDICAL SYSTEMS CORPORATION

15:40-17:00 **Live Case Transmission 4**

Chairs: Lei Ge

Yoshiaki Ito

Kenichiro Shimoji

Supervisor: Yasumi Igarashi

Commentators: Kazuhiro Ashida, Shinya Fujita, P K Goel

Yew Seong Goh, Yu-Cheng Kao

Wirash Kehasukcharoen, Shih-Chi Liu

Makoto Sekiguchi, Takahide Suzuki

Focus Live & Mini Lecture

The Potential of BioFreedom Ultra for Calcified Coronary Lesions

Hisanori Yui (Nagano Red Cross Hospital, Japan)

Co-sponsored by: Kaneka Medix Corporation

Petit Focus Live

Co-sponsored by: CANON MEDICAL SYSTEMS CORPORATION

CTO Live Case Transmission

Centre Cardio-Thoracique, Monaco

Operators: Mohamed Ayoub, Kambis Mashayekhi

17:00-18:00 **Live Case Transmission 5: MLCTO**

Chairs: Maoto Habara

Shunsuke Matsuno

Wataru Nagamatsu

Supervisors: Scott Harding, Kenya Nasu

Commentators: Yu-Ho Chan, Hiromasa Katoh, Hidenari Matsumura (Saiseikai Utsunomiya Hospital, Japan)

Koshi Matsuo, Tetsuya Yamamoto (Kobe University Graduate School of Medicine, Japan)

8:30-10:00

International Joint Session: IJCTO@CTO Club

In the post-COVID era, we are seeing a rising number of young people facing severe, calcified Coronary Artery Disease (CAD) especially in India. Because of this, the need for Chronic Total Occlusion (CTO) PCI procedures has also grown.

Raising awareness and building better treatment plans—with a focus on reaching success rates over 90% while keeping care cost-effective—has been possible because of regular meetings between the IJCTO and the CTO Club. Through these past interactions, our techniques, our use of the latest medical tools, and our radiation safety steps have all greatly improved.

We are excited to share our experiences and results in CTO PCI with our Japanese colleagues. They truly deserve to be appreciated for pioneering CTO PCI on a global level.

Chairs: Kenya Nasu, V. Surya Prakasa Rao

Commentators: Hussain Bangi, Ram Chitlangia, Bharath Reddy Dumpa

Raghu Kishore Galla, Sanjeev Gera, Himanshu Gupta

Amarpalli Jayachandra, Annapoorna Ajit Kalia

Srinivasa Reddy Karumuri, Amit Kumar

Nutan Kumar Dyamavvanahalli Marulasiddappa

Prashant Kumar Panda, Hari Krishnan Parthasarathy

Rongali Pradeep, Pulavarty Sriramachandra Rahul

Baji Sakhamuri, Thanu Subramoniam, Ram Manohar Talupula

Chayan Virmani, Umesh Yadav

How I have done, How you would have done

Failed-HDR Successive with traditional Technique

Pannala Lakshmi Narasimha Kapardhi

Management of complex CTO - SCAD - Investment procedure

V. Surya Prakasa Rao

Intracoronary Snaring in Retrograde CTO Interventions

Natarajapillai Pratap Kumar

Antegrade Success when Retrograde Fail

P K Goel

Approach to Ambiguous Stump CTO PCI

A. V. Ganesh Kumar

Case Presentations

Takeshi Niizeki

Norihito Kobayashi

Takayuki Yabe

Seiji Kano

Co-sponsored by: CANON INC.

10:10-11:40

International Joint Session: KCTO@CTO Club

This international joint session between KCTO Club and CTO Club will bring together leading CTO experts from Korea and Japan to discuss the evolving landscape of CTO PCI in 2026.

The session will cover three key domains: contemporary evidence from recent trials and registries, emerging CTO crossing and re-entry techniques, and practical strategies for safety, troubleshooting, and calcium modification. Topics will include hydrodynamic contrast recanalization, CCTA- and AI-guided procedural planning, IVUS-guided RDR, decision-making in challenging CTO PCI, and advanced calcium modification using IVL and orbital atherectomy.

By integrating evidence, imaging, technique, and safety, this session aims to provide a comprehensive and forward-looking perspective on the next generation of CTO PCI.

Chairs: Byeong-Keuk Kim, Takafumi Tsuji

Supervisor: Satoru Otsuji

Panelists: Jung-Kyu Han, Hiromasa Katoh, Koshi Matsuo, Jon Suh

Evidence Update & Emerging CTO Techniques

CTO PCI in 2026: What the Latest Trials and Registries Are Telling Us

Jung-Joon Cha

Breaking the Plane: Hydrodynamic Contrast Recanalization for CTO Crossing

Takuma Tsuda

Imaging-Guided Planning & Advanced Retrograde Re-Entry

Pre-Procedural CTO Mapping: CCTA and AI for Smarter Strategy Selection

Seung-Jun Lee

Beyond Reverse CART: IVUS-Guided RDR for Complex Retrograde CTO PCI

Takenori Domei

Safety, Troubleshooting, and Calcium - Winning the Endgame

Managing Challenging Situations in CTO PCI: Safety, Troubleshooting, and “When to Stop”

Jung-Hee Lee

Overcoming Severe Calcification in CTO PCI: IVL and Orbital Atherectomy

Mitsunori Mutou

12:00-13:00

🍴 Luncheon Seminar: 🇯🇵 Session in Japanese
**Unlocking the Power of the 'MUSOU' Dual Lumen Catheter:
Advanced Techniques by CTO Experts**

Chairs: Yuji Hamazaki, Takeshi Niizeki

Commentators: Hiroki Emori (Wakayama Medical University, Japan)

Shun Kudo (Iwaki City Medical Center, Japan), Hiroshi Nakagata

Practical Applications and Benefits of New DLC MUSOU in Retrograde Coronary Interventions
Kenichiro Shimoji

TBA

Ryoji Koshida (Hoshi General Hospital, Japan)

Co-sponsored by: *Kaneka Medix Corporation*

14:20-15:50

**International Joint Session: APCTO@CTO Club
- ZOLUTION Wiring: Concept, Precision, and Succession**

This year AP CTO Club @CTO Club will focus on “ZOLUTION Wiring: Concept, Precision, and Succession,” exploring modern 3D wiring concepts in CTO PCI and the importance of technical succession. Experts and emerging operators from across the Asia-Pacific region will share practical experience through lectures, demonstrations, and interactive case discussions. The session will also address the transfer of clinical judgment and decision-making skills to the next generation, while introducing software that supports angiographic projection planning based on vessel axis measurements.

Chairs: Lei Ge, Scott Harding, Soo Teik Lim, Sidney Tsz Ho Lo, Wataru Nagamatsu

Panelists: Yu-Ho Chan, Rustem Dautov, Maoto Habara, Hiromasa Katoh, Dong-Kie Kim

Feng Yu Kuo, Tse-Min Lu, Hiroaki Matsuda, Hiroshi Nakagata

Ying-Chang Tung, Bernard Wong, James Xu

Keynote Lecture

New Simple 3D Wiring “ZOLUTION Wiring”

Scott Harding

Deep Dive Lecture and demonstration

Deep Dive into ZOLUTION Wiring with the Asahi rotational model tor demonstration

Calvin Leung

**Automated Optimal Projection Angle Calculation from Intra-Procedural Angiography
for CTO PCI Guidance**

Wataru Nagamatsu

Succession Case 1: Young Operator Presentation

Alan Ka Chun Chan

Succession Case 2: Young Operator Presentation

Hidenari Matsumura (Saiseikai Utsunomiya Hospital, Japan)

7:50-8:20 **Educational Program 2. When CTO PCI Gets Difficult: Troubleshooting and Advanced Techniques**

Educational Program 2 focuses on what to do when things don't go as planned. Learn how to anticipate, prevent, and manage complications, and explore advanced techniques including extraplaque strategies and hydrodynamic recanalization. Gain the confidence to troubleshoot complex scenarios and push your procedural success further.

Whether you are refining your fundamentals or tackling the most challenging CTOs, this comprehensive educational series will equip you with practical insights you can take straight to the cath lab.

Chairs: Kazuhiro Ashida, Michiya Kageyama, Feng Yu Kuo

Collateral Channel Perforation: Prevent It, Manage It

Wataru Nagamatsu

Extraplaque Techniques in CTO PCI: Knowing When and How to Leave the Plaque

Rustem Dautov

Hydrodynamic Contrast Recanalization: When Contrast Becomes the Wire

Tsutomu Fujita (Precision PCI tokyo, Japan)

CTO Live Case Transmission

In the 26th CTO Club, our operators will demonstrate some exciting approaches by outlining every aspect of strategy and procedural detail from beginning to end. Please attend to learn tips and tricks from the experts!

Toyohashi Heart Center

Operators: Maoto Habara, Shunsuke Matsuno, Takafumi Tsuji

Imaging Commentator: Hiroshi Nakagata

8:30-10:10 **Live Case Transmission 6 -Real-world Application of the Penetration Plane Method-**

*Chairs: Scott Harding
Wataru Nagamatsu
Junji Yajima*

*Supervisor: Satoru Otsuji
Commentators: Shingo Hosogi, Shozo Ishihara, Adrian Low
Maksymilian Opolski, Satoshi Suzuki, Ying-Chang Tung
Wasan Udayachalerm, Takayuki Yabe, Ryusuke Yamamoto*

Focus Live

Co-sponsored by: ASAHI INTECC CO., LTD.

Petit Focus Live

Co-sponsored by: CANON MEDICAL SYSTEMS CORPORATION

10:10-11:50 **Live Case Transmission 7**

*Chairs: Hiromasa Katoh
Feng Yu Kuo
Atsunori Okamura*

*Supervisor: Masahiko Ochiai
Commentators: Yeh-Peng Chen, A. V. Ganesh Kumar, Randal Low
Hiroaki Matsuda, Takeshi Niizeki, Natarajapillai Pratap Kumar
Hideto Sangen, Tomohiro Yamaguchi, Hyuck Jun Yoon*

Focus Live & Mini Lecture

New Dual Lumen Catheter MUSOU

Koshi Matsuo

Co-sponsored by: Kaneka Medix Corporation

Petit Focus Live

Co-sponsored by: Shimadzu Corporation

12:00-13:00 **Luncheon Seminar: Tip Detection Method in CTO PCI**

*Chairs: Atsunori Okamura
Ryohei Yoshikawa*

Tip Detection 2026: Beyond the Basics ~Latest Tips, Pitfalls, and Hot Topics~
Kota Tanaka

The Real Value of Tip Detection Method: Case-Based Learning from an Operator's Perspective

Naotaka Okamoto (Osaka Rosai Hospital, Japan)

Recent strategy for CTO-PCI with my experience

Yoshiaki Ito

Co-sponsored by: TERUMO Corporation

CTO Live Case Transmission

In the 26th CTO Club, our operators will demonstrate some exciting approaches by outlining every aspect of strategy and procedural detail from beginning to end. Please attend to learn tips and tricks from the experts!

Saiseikai Utsunomiya Hospital

Operators: Kenya Nasu, Kenichiro Shimoji

Imaging Commentator: Hidenari Matsumura (Saiseikai Utsunomiya Hospital, Japan)

13:20-14:40 **Live Case Transmission 8**

*Chairs: Chi-Jen Chang
Yuji Hamazaki
Michiya Kageyama*

*Supervisor: Tian Hai Koh
Commentators: Takenori Domei, Masaki Fujita, Ichiro Hamanaka
Kenji Kawajiri, Muenpetch Muenkaew, Masakazu Nagaoka
Yuya Nakagawa, Sanjay C. Porwal, Bernard Wong*

Focus Live & Mini Lectures

Complex Calcified Lesion with Rotablator and Cutting Balloon
Yasunori Inoguchi (Kanazawa Cardiovascular Hospital, Japan)
Drug-Coated Balloons in CTO PCI: Current Evidence and Practical Considerations
Norihiro Kougame (Tokyo Rosai Hospital, Japan)
Co-sponsored by: Boston Scientific Japan K. K.

Petit Focus Live
Co-sponsored by: CANON MEDICAL SYSTEMS CORPORATION

14:40-16:00 **Live Case Transmission 9**

*Chairs: Soo Teik Lim
Yuji Oikawa
Ryohei Yoshikawa*

*Supervisor: Eisho Kyo
Commentators: Yusuke Hosokawa, Feng Yu Kuo, Zhan Yun Patrick Lim
Hisayuki Okada, Kaname Takizawa Kota Tanaka
Chris Zambakides*

Focus Live & Mini Lecture

Excellent lesion expansion efficiency of Aperta NSE® V
Mitsunori Mutou

Co-sponsored by: NIPRO CORPORATION
Petit Focus Live
Co-sponsored by: CANON MEDICAL SYSTEMS CORPORATION

Educational Theater

10:30-11:50

**Case Competition:
My Most Memorable and/or Most Educational CTO Case**

Among submitted cases, four exemplary cases will be selected as "oral presentation" at the Case Competition and other cases with honorable mention will be selected as "online publication" during the 26th CTO Club. The best case of the Case Competition will receive an award and the presenter will be invited as a CTO Club faculty member in 2027.

Chairs: Michiya Kageyama, Hiroyuki Tanaka

*Judges: Muhammad Alimi Bin Ahmad Hatib, Takenori Domei, Han-Young Jin
Masaaki Okutsu, Attuluri Ravikumar, Masaki Tanabe
Ryusuke Yamamoto, Masataka Yoshinaga*

IVUS guided move the cap technique for heavily calcified LCX ostial CTO

Kiwamu Sudo (Sakurabashi Watanabe Advanced Healthcare Hospital, Japan)

RCA ostial CTO with severe calcification

Taito Nagai (Misato Central General Hospital, Japan)

A Case of LAD CTO with an Unexpected Clinical Course

Takushi Sugiyama (Dokkyo Medical University Nikko Medical Center, Japan)

Combined Antegrade and Retrograde HydroDynamic Contrast Recanalization for a Long RCA CTO

Shinichiro Masuda (Ageo Central General Hospital, Japan)

Post-Investment Coronary Pseudoaneurysm Sealed by Retrograde Intervention with Covered Stent

A. Sharath Reddy (Medicover Hospitals, India)

12:00-13:00

**Luncheon Seminar:
How to treat the various complex lesions in daily practice in the Asia-Pacific**

Chair: Wataru Nagamatsu

Commentators: Yeh-Peng Chen, Nae Hee Lee, Gavin Ng

Naoki Shibata (Ogaki Municipal Hospital, Japan)

Lecturers: Yu-Cheng Kao, Randal Low

Co-sponsored by: Kaneka Medix Corporation

Hands-on Sessions

CTO Consultation Counter

Young doctors, in particular, may encounter CTO cases that they do not know how to treat or that they have failed to treat. In the CTO Consultation Counter, experienced CTO Club directors and faculty members will review your case and provide advice and feedback through discussion with you. We are waiting for your application. If there is a slot available, you are also welcome to join for a consultation without an appointment.

Location: CTO Consultation Counter Booth, Exhibition, 5F, WINC Aichi

Language: English / Japanese

Participation Fee: Free (Registration for the 26th CTO Club is required.)

*Please prepare the angiogram of your planned treatment case or your unsuccessful case, along with a slide presentation (Summarized in one PowerPoint slide).

Capacity: 2 (1 person for 1 time slot. First come first served.)

June 26 (Fri.)		June 27 (Sat.)	
Time	Advisors	Time	Advisors
16:00-17:00	Hiromasa Katoh Takafumi Tsuji	09:00-10:00	Michiya Kageyama Yuji Oikawa

Online Application Form

<https://forms.office.com/r/GkCx2Sang6>



ESPELUX Edu Hands-on Training

In recent years, the importance of setting two orthogonal working views (perpendicular views) has been reemphasized in order to improve the accuracy of CTO wiring. ESPELUX Edu is a software application that uses angiograms to find two views that are perpendicular to the target distal vessel as well as orthogonal to each other. In this session, you will learn how to use ESPELUX Edu in real-world clinical practice through expert demonstrations and hands-on training for participants. We look forward to seeing you in this session.

*Please bring your CTO case angiograms (DICOM format) if possible.

Location: ESPELUX Edu Hands-on Training Booth, Exhibition, 5F, WINC Aichi

Language: English / Japanese

Participation Fee: Free (Registration for the 26th CTO Club is required.)

Capacity: 9 (3 persons for 1 time slot. First come first served.)

June 26 (Fri.) 13:30-14:30		June 26 (Fri.) 15:00-16:00		June 27 (Sat.) 10:00-11:00	
Trainer: Takafumi Tsuji		Trainer: Shunsuke Matsuno		Trainer: Yoshifumi Kashima	
Demonstration	20min.	Demonstration	20min.	Demonstration	20min.
Hands-on (3 persons)	40min.	Hands-on (3 persons)	40min.	Hands-on (3 persons)	40min.

Online Application Form

<https://forms.office.com/r/Nk5CqUQ0Yx>



Hands-on Sessions

🇯 Session in Japanese

Tip-detection Hands-on Training

Recently, IVUS-guided CTO wiring using the tip detection method has become a hot topic in Japan and abroad. In this session, you can learn about Tip-detection Antegrade Wiring (TD-AW) and Antegrade Dissection Re-entry (TD-ADR) in detail through lectures by experts, including Dr. Okamura and Dr. Yoshikawa, as well as hands-on training using CTO simulation models and IVUS. We are waiting for your participation.

Location: Tip-detection Hands-on Training Booth, Exhibition, 5F, WINC Aichi

Language: English / Japanese

Participation Fee: Free (Registration for the 26th CTO Club is required.)

Capacity: 24 (8 persons for 1 time slot. First come first served.)

June 26 (Fri.) 13:30-15:00		June 27 (Sat.) 9:30-11:00		June 27 (Sat.) 13:30-15:00	
Trainers: Takeshi Serikawa Naotaka Okamoto <small>(Osaka Rosai Hospital, Japan)</small>		Trainers: Ryohei Yoshikawa Kota Tanaka		Trainers: Atsunori Okamura Masato Ishikawa	
Mini Lecture (10min.) + Demonstration (5min.)	15min.	Mini Lecture (10min.) + Demonstration (5min.)	15min.	Mini Lecture (10min.) + Demonstration (5min.)	15min.
Hands-on (8 persons)	75min.	Hands-on (8 persons)	75min.	Hands-on (8 persons)	75min.

Online Application Form

<https://forms.office.com/r/e30BUKv5KH>



Hands-on Booth

ASAHI INTECC Hands-on booth with Rotational ETOSS and ESPELUX Edu

We are excited to once again showcase ESPELUX Edu, ASAHI INTECC's first educational software, at our hands-on booth. Visitors will have the opportunity to experience a live demonstration and purchase the software on-site. The newly released ESPELUX Edu V2 will also be available, offering enhanced features and an even more advanced educational experience.

We also invite you to try Rotational ETOSS, ASAHI's original hands-on training tool designed to demonstrate guidewire manipulation techniques based on the "Penetration Plane Method." This method emphasizes the importance of observing the target from two orthogonal views to achieve precise wire control toward the target.

Don't miss this opportunity to engage with the latest ESPELUX Edu V2 and Rotational ETOSS!

Location: ETOSS Booth, Exhibition, 5F, WINC Aichi

Date & Time: June 26 9:00-18:00

June 27 9:00-15:00

*Pre-booking is not required. Please visit ETOSS booth on the day.

ASAHI INTECC CO., LTD.

Poster Presentation

Date & Time: Friday, June 26 - Saturday, June 27 (JST)

Venue: Poster Posting Area, Exhibition Hall

- P-01 A case of RCA CTO complicated with heart failure, in which revascularization was performed while using IABP during treatment**
Shigeki Nishiyama (Saitama Sekishinkai Hospital, Japan)
- P-02 RCA CTO treated by retrograde approach via SVG-RCA graft in the patient after CABG and TAVI**
Sho Nagamine (Edogawa Hospital, Japan)
- P-03 Successful Combination of the Slipstream and the Tip Detection-Antegrade Dissection and Re-Entry Techniques for Chronic Total Occlusion**
Akane Miyazaki (Fujita Health University Bantane Hospital, Japan)
- P-04 A Case of Successful Revascularization of a Left Circumflex CTO Using a Combination of the Tip Detection Method and the Slip-Stream Technique**
Tomoaki Haga (JA Aichi Koseiren Toyota Kosei Hospital, Japan)
- P-05 Retrograde Direct Crossing for Severely Calcified Ostial LAD CTO Guided by IVUS**
Tetsuya Yamamoto (Kobe University Graduate School of Medicine, Japan)
- P-06 From Broken Guidewire to Breakthrough Recanalization: Progressive RCA CTO Following Failed PCI With a Retained Guidewire Fragment**
Jiunn-Wen Lin (Buddhist Dalin Tzu Chi General Hospital, Taiwan, R.O.C.)
- P-07 Covert coronary artery perforation caused by the edge of a drug-eluting stent**
Takao Konishi (National Defense Medical College, Japan)
- P-08 Direct RG3 Entry into a Guide Extension Catheter after RA(Rotational Atherectomy) Assisted Retrograde Approach for Ostial LCx CTO**
Shih-hao Yu (Kaohsiung Medical University Hospital, Taiwan, R.O.C.)
- P-09 A Long RCA CTO with Anomalous Origin, Involving Multiple Bifurcations**
Cheng Yu Ko (National Cheng Kung University Hospital, Taiwan, R.O.C.)
- P-10 A case successfully externalized easily using the aortic arch-assisted Tip-in technique**
Ryutaro Waku (Dokkyo Medical University Hospital, Japan)
- P-11 Sequential RCA CTO After CABG: Retrograde Failure and Successful IVUS-Guided Re-entry**
Shojiro Hirano (Toho University, Japan)
- P-12 Successfully Ostial LAD CTO PCI with wire de escalation strategy**
Prashant Kumar Panda (Postgraduate Institute of Medical Education and Research (PGIMER), Chandigarh, India)
- P-13 PCI for a Bifurcation Lesion with CTO of the LAD**
Toku Sakashita (IMS Fujimi General Hospital, Japan)
- P-14 Successful Complete Revascularization of a CTO at the Distal RCA Bifurcation using T-DADR and Retrograde Approach**
Kenichi Inoue (The Cardiovascular Institute, Japan)
- P-15 Successful recanalization of RCA CTO under EPELLA support in a patient with ventricular fibrillation storm**
Makio Muraishi (Tokyo Bay Urayasu Ichikawa Medical Center, Japan)
- P-17 IVUS-Guided ADR for a Severely Calcified and Tortuous LAD CTO without Usable Collaterals**
Sinji Imura (Okamura Memorial Hospital, Japan)
- P-18 Tip Detection IVUS-guided intraplaque tracking utilizing HDR (TD-HDR)**
Yutaka Tadano (Sapporo Cardio Vascular Clinic, Japan)
- P-19 When Coronary Meets Renal: A Challenging Antegrade CTO Angioplasty Complicated by Stent Migration**
Amit Kumar (K-Care Hospital, India)
- P-20 Uncrossable and Undilatable LCX-CTO**
Takuma Tsuda (Nagoya Ekisaikai Hospital, Japan)
- P-21 Complete recovery of hibernating myocardium by RCA CTO PCI in the patient with left main coronary artery disease and aortic stenosis**
Narathip Chunhamaneewat (Siriraj Hospital, Mahidol University, Thailand)
- P-22 Complex recanalization of a calcified RCA CTO using an antegrade-retrograde approach and rotational atherectomy**
Anton Staferov (Federal Scientific and Clinical Center for Specialized Types of Medical Care and Medical Technologies of the Federal Medical and Biological Agency of Russia, Russian Federation)
- P-23 LAD CTO PCI in a case of critical left main disease protected by Impella CP complicated by accidental wire removal in a dissected segment, re-entry using real time IVUS**
Dhananjay Kumar (Bhagwan Mahavir Manipal Hospital, India)
- P-24 Double Vessel Challenging CTO - Donor and Recipient**
Hetan C. Shah (Jaslok Hospital and Research Center, India)

International Faculty Members

Muhammad Alimi Bin Ahmad Hatib

Woodlands Hospital
[Singapore]

Mohamed Ayoub

University Heart Center Bad Oeynhausen
[Germany]

Hussain Bangi

Bangi Group of Hospitals
[India]

Jung-Joon Cha

Korea University Anam Hospital
[Korea]

Alan Ka Chun Chan

Queen Elizabeth Hospital
[Hong Kong]

Yu-Ho Chan

Chinese University Hong Kong Medical Center
[Hong Kong]

Chi-Jen Chang

Chang Gung Memorial Hospital, Linkou
[Taiwan, R.O.C.]

Yeh-Peng Chen

China-Medical University Hospital
[Taiwan, R.O.C.]

Chee Yang Chin

National Heart Centre Singapore
[Singapore]

Ram Chitlangia

Jeevan Rekha Superspeciality Hospital
[India]

Cheng-An Chiu

Kaohsiung Medical University Hospital
[Taiwan, R.O.C.]

Thunnop Chotivanawan

Thammasat University Hospital
[Thailand]

Rustem Dautov

The Prince Charles Hospital
[Australia]

Bharath Reddy Dumpa

Medicover Hospitals
[India]

Raghu Kishore Galla

KIMS Hospitals
[India]

A. V. Ganesh Kumar

Dr. L. H. Hiranandani Hospital
[India]

Lei Ge

Zhongshan Hospital, Fudan University
[People's Republic of China]

Sanjeev Gera

Fortis Noida
[India]

P K Goel

Medanta Heart Institute
[India]

Yew Seong Goh

Changi General Hospital
[Singapore]

Himanshu Gupta

Neelam Hospital
[India]

Jung-Kyu Han

Seoul National University Hospital
[Korea]

Amarpalli Jayachandra

AICTS Pune
[India]

Han-Young Jin

Inje University, Busan Paik Hospital
[Korea]

Annapoorna Ajit Kalia

Aditya Birla Memorial Hospital
[India]

Anek Kanoksilp

Central Chest Institute of Thailand
[Thailand]

Yu-Cheng Kao

Cheng Hsin General Hospital
[Taiwan, R.O.C.]

Pannala Lakshmi Narasimha Kapardhi

Care Hospital
[India]

Srinivasa Reddy Karumuri

Karumuri Super Speciality Hospital
[India]

Wirash Kehasukcharoen

Central Chest Institute of Thailand
[Thailand]

Byeong-Keuk Kim

Yonsei University Severance Cardiovascular Hospital
[Korea]

Dong-Kie Kim

Inje University Haeundae Paik Hospital
[Korea]

Tian Hai Koh

National Heart Centre of Singapore
[Singapore]

Amit Kumar

Kcare Hospital
[India]

Feng Yu Kuo

Kaohsiung Veterans General Hospital
[Taiwan, R.O.C.]

Sachin Lakade

Bharati Hospital
[India]

Jung-Hee Lee

Yonsei University Wonju Severance Christian
Hospital
[Korea]

Nae Hee Lee

Soonchunhyang University Bucheon Hospital
[Korea]

Seung-Jun Lee

Severance Cardiovascular Hospital,
Yonsei University College of Medicine
[Korea]

Seung-Whan Lee

Asan Medical Center
[Korea]

Calvin Leung

Queen Elizabeth Hospital
[Hong Kong]

Soo Teik Lim

National Heart Centre of Singapore
[Singapore]

Zhan Yun Patrick Lim

Kho Teck Puat Hospital
[Singapore]

Shih-Chi Liu

Fu Jen Catholic University Hospital
[Taiwan, R.O.C.]

Sidney Tsz Ho Lo

Liverpool Hospital
[Australia]

Adrian Low

National University Hospital
[Singapore]

Randal Low

Woodlands Hospital
[Singapore]

Tse-Min Lu

Taipei Veterans General Hospital
[Taiwan, R.O.C.]

**Nutan Kumar Dyamavvanahalli
Marulasiddappa**

Sparsh Hospital
[India]

Muenpetch Muenkaew

Thammasat University Hospital,
Pathumthani
[Thailand]

Gavin Ng

National University Heart Centre
[Singapore]

Maksymilian Opolski

National Institute of Cardiology
[Poland]

Prashant Panda

PGIMER, Chandigarh
[India]

Harikrishnan Parthasarathy

Apollo Speciality Hospital
[India]

Sanjay C. Porwal

KLE's Dr. Prabhakar Kore Hospital & MRC
[India]

Rongali Pradeep

NIIMS
[India]

Natarajapillai Pratap Kumar

Meditrina Hospital
[India]

**Pulavarty Sriramachandra
Rahul**

Care Hospital
[India]

V. Surya Prakasa Rao

Care Hospitals, Banjara hills, Hyderabad
[India]

Attuluri Ravikumar

Vijaya's Ravi Heart Care Centre
[India]

Baji Sakhamuri

Vivekananda Super Speciality Hospital
[India]

Avadhesh Saraswat

Sir Charles Gairdner Hospital
[Australia]

Thanu Subramoniam

KIMS Health Hospital
[India]

Jon Suh

SoonChunHyang University Bucheon
Hospital
[Korea]

Ram Manohar Talupula

Aster Ramesh Hospital
[India]

Ying-Chang Tung

Chang Gung Memorial Hospital, Linkou
[Taiwan, R.O.C.]

Wasan Udayachalerm

King Chulalongkorn Memorial Hospital,
Chulalongkorn University
[Thailand]

Chayan Virmani

Max Patpadganj
[India]

Cheng Chun Wei

Shin Kong Memorial Hospital
[Taiwan, R.O.C.]

Bernard Wong

North Shore Hospital
[New Zealand]

James Xu

Liverpool Hospital
[Australia]

Umesh Yadav

B&C Medical College
[India]

Hyuck Jun Yoon

Keimyung University Dongsan Hospital
[Korea]

Chris Zambakides

Chris Hani Baragwanath Hospital
[South Africa]

Japanese Faculty Members

Kazuhiro Ashida

Seirei Yokohama Hospital

Takenori Domei

Kokura Memorial Hospital

Masaki Fujita

Edogawa Hospital

Shinya Fujita

Hamamatsu Medical Center

Rei Fukuhara

Hyogo Prefectural Amagasaki General Medical Center

Ichiro Hamanaka

Rakuwakai Marutamachi Hospital

Katsuyuki Hasegawa

Higashi Takarazuka Satoh Hospital

Hiroaki Hirase

Takaoka Minami Heart Center

Fumitaka Hosaka

Okamura Memorial Hospital

Shingo Hosogi

Hosogi Hospital

Yusuke Hosokawa

Nippon Medical School Musashi Kosugi Hospital

Shozo Ishihara

Mimihara General Hospital

Masato Ishikawa

Fujita Health University School of Medicine

Yoshiaki Ito

Saiseikai Yokohama-City Eastern Hospital

Seiji Kano

Mie Heart Center

Kenji Kawajiri

Matsubara Tokushukai Hospital

Shunsuke Kitani

Sapporo-Kosei General Hospital

Norihiro Kobayashi

Saiseikai Yokohama-City Eastern Hospital

Tomoko Kobayashi

Kyoto Katsura Hospital

Yuichi Kobori

Toda Chuo General Hospital

Hiroaki Matsuda

Chuno Kosei Hospital

Koshi Matsuo

Yao Tokushukai General Hospital

Takanobu Mitarai

OOITA OKA Hospital

Mitsunori Mutou

Kikuna Memorial Hospital

Masakazu Nagaoka

Ebina General Hospital

Hiroshi Nakagata

Sendai City Hospital

Yuya Nakagawa

Hakodate Medical Association Hospital

Takeshi Niizeki

Okitama Public General Hospital

Hisayuki Okada

Seirei Hamamatsu General Hospital

Masaharu Okada

Omi Medical Center

Masaaki Okutsu

Tokai University Hachioji Hospital

Hideto Sangen

Hakujikai Memorial Hospital

Makoto Sekiguchi

Fukaya Red Cross Hospital

Takeshi Serikawa

Fukuoka Wajiro Hospital

Yoshinori Shimooka

Hokkaido Medical Center

Satoshi Suzuki

Kindai University Nara Hospital

Takahide Suzuki

JA Hokkaido Asahikawa Kosei General Hospital

Kaname Takizawa

JCHO Sendai Hospital

Masaki Tanabe

Misugikai Satoh Hospital

Kota Tanaka

Sakurabashi Watanabe Advanced Healthcare Hospital

Yusuke Tanigaito

Mie Prefectural General Medical Center

Takuma Tsuda

Nagoya Ekisaikai Hospital

Takayuki Yabe

Toho University Omori Medical Center

Tomohiro Yamaguchi

Osaka Metropolitan University Graduate School of Medicine

Ryusuke Yamamoto

Takaoka Minami Heart Center

Masataka Yoshinaga

Fujita Health University

(Alphabetical order as of June 15, 2026)

Cooperative Company



▶ Diamond Supporter

ASAHI INTECC CO., LTD.



▶ Gold Supporters

Kaneka Medix Corporation

Abbott Medical Japan LLC

CANON MEDICAL SYSTEMS CORPORATION

Boston Scientific Japan K.K.

TERUMO Corporation



▶ Silver Supporters

NIPRO CORPORATION



▶ Bronze Supporters

Abiomed Japan K.K.

Amgen K.K.

AstraZeneca K.K.

CANON INC.

DVx Inc.

Heartflow Japan G.K.

Hokusetsu General Hospital

Medtronic Japan Co., Ltd.

Mochida Pharmaceutical Co., Ltd.

Nippon Boehringer Ingelheim Co., Ltd.

OrbusNeich Medical K.K.

Pfizer Japan Inc.

Philips Japan, Ltd.

Photron Medical Imaging Inc.

Sanshodo Co., Ltd.

Seraphi MK pharmacy Co, LTD

Shimadzu Corporation

Taisho Biomed Instruments Co., Ltd.

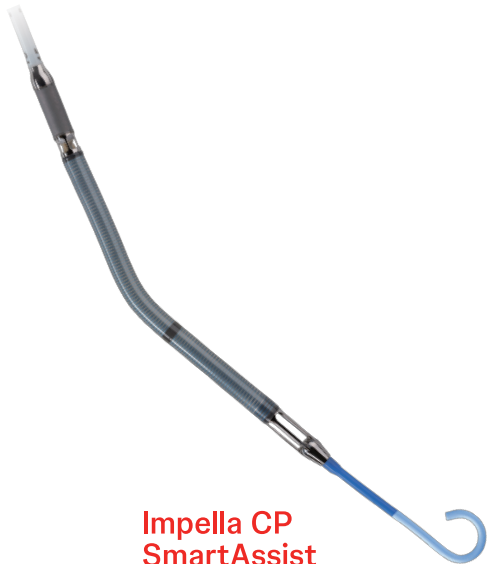
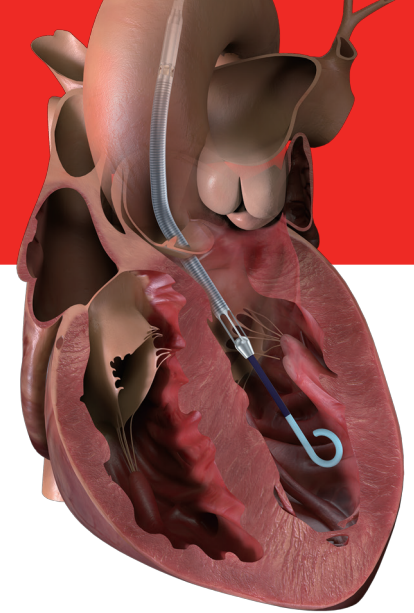
Technowood

WIN INTERNATIONAL CO., LTD.

(As of June 15, 2026)

Impella®

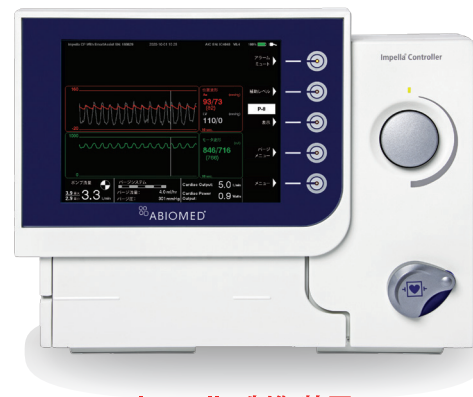
The World's Smallest Heart Pump



Impella CP
SmartAssist



Impella 5.5
SmartAssist



Impella 制御装置



Impella Connect

ジョンソン・エンド・ジョンソン メドテック
Heart Recovery

日本アビオメッド株式会社
〒103-0022 東京都中央区日本橋室町2-2-1
TEL: 03-4540-5600
www.abiomed.com/ja-jp

ABIOMED, Impella, Impella CP, Impella 5.5はAbiomed, Inc. の登録商標です。

販売名: I M P E L L A 補助循環用ポンプカテーテル
承認番号: 22800BZ100032000

販売名: I M P E L L A 5.5 補助循環用ポンプカテーテル
承認番号: 30300BZ100040000

一般的名称: 循環補助用心内留置型ポンプカテーテル
医療機器クラス分類: IV 高度管理医療機器
特定保険医療材料機能区分: 193 補助循環用ポンプカテーテル

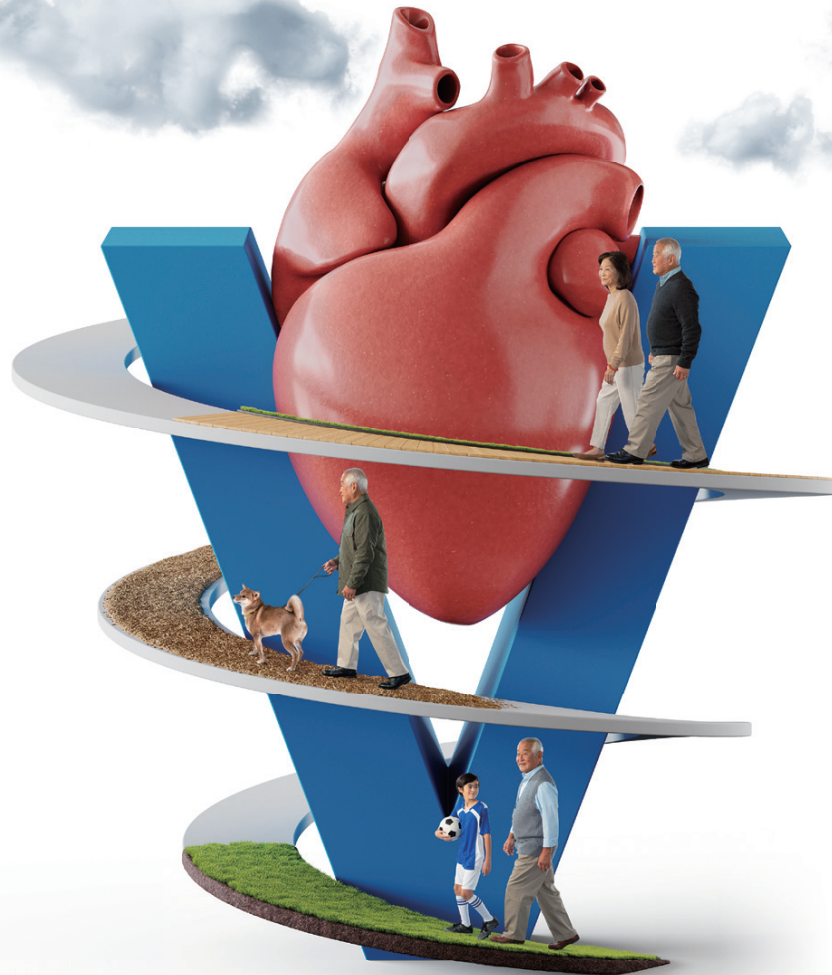
販売名: I M P E L L A 制御装置
承認番号: 22800BZ100031000

一般的名称: 循環補助用心内留置型ポンプカテーテル用制御装置
医療機器クラス分類: III 高度管理医療機器/特定保守管理医療機器

選任製造販売業者: 日本アビオメッド株式会社
外国特例承認取得者: ABIOMED, Inc.

Johnson & Johnson
MedTech

Heart Recovery



TTR型アミロイドーシス治療薬

薬価基準収載

ビンマツク® カプセル61mg

Vynmac® capsules 61mg タファミジスカプセル

劇薬 処方箋医薬品^注 注) 注意—医師等の処方箋により使用すること

- 「効能又は効果」、「用法及び用量」、「禁忌を含む使用上の注意」、「効能又は効果に関連する注意」等につきましては電子添文をご参照ください。

製造販売

ファイザー株式会社

〒151-8589 東京都渋谷区代々木3-22-7

文献請求先及び問い合わせ先：Pfizer Connect/メディカル・インフォメーション

文献請求先及び製品の問い合わせ先:

Pfizer Connect/メディカル・インフォメーション 0120-664-467

<https://pfizermedicalinformation/jp>にも製品関連情報を掲載

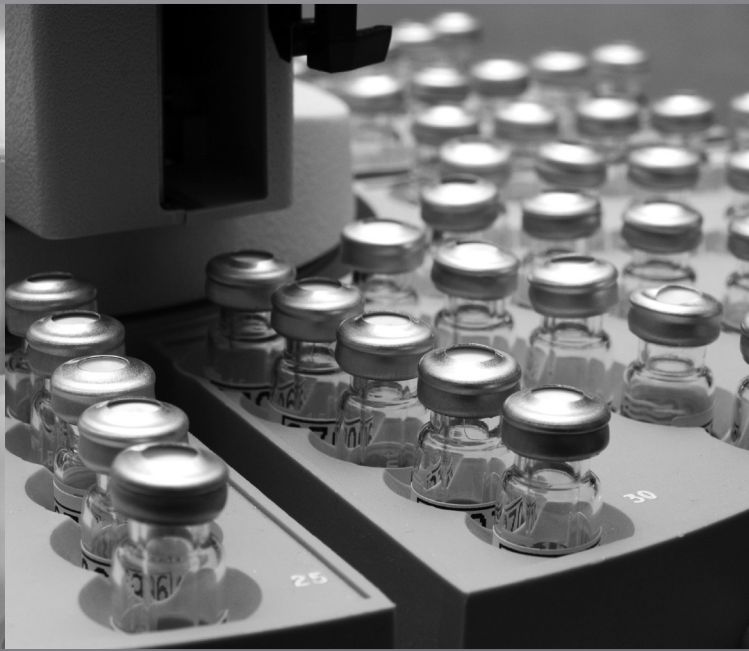
販売情報提供活動に関するご意見:

0120-407-947

<https://www.pfizer.co.jp/pfizer/contact/index.html>

VYN72P004A
2025年10月作成

AMGEN



To serve patients

患者さんのために、今できるすべてを

アムジェンは1980年、バイオテクノロジーの黎明期に米国カリフォルニア州ロサンゼルス近郊にて産声を上げました。

バイオテクノロジーを患者さんのために役立てることを決意し、以来、探求を重ねてきました。

今日、アムジェンは世界最大規模の独立バイオテクノロジー企業へと成長しました。

日本では、循環器疾患、がん、骨疾患、炎症・免疫性疾患、神経疾患、希少疾患をはじめとするアンメット・メディカル・ニーズが高い領域に重点を置き、臨床開発から販売までの活動を行っています。

アムジェン株式会社の
詳細につきましては
こちらをご覧ください



What science can do

心臓の再生

アストラゼネカは、幹細胞活性化に関わる様々なシグナル伝達タンパクが持つ役割を研究することによって、心筋組織の自己修復を可能にすることに取り組んでいます。

シグナル伝達タンパク合成のため、
リボゾームにより翻訳されるメッセンジャー RNA



Life forward

かけがえのない日常のために

ベーリンガーインゲルハイムは、株式を公開しない独立した企業として、約140年にわたり人と動物の健康に取り組んできました。これまで多様な分野で培った経験やパートナーシップを生かし、未来を見据えて研究開発に注力しています。



詳細はこちらをご覧ください

boehringer-ingenelheim.com/jp/

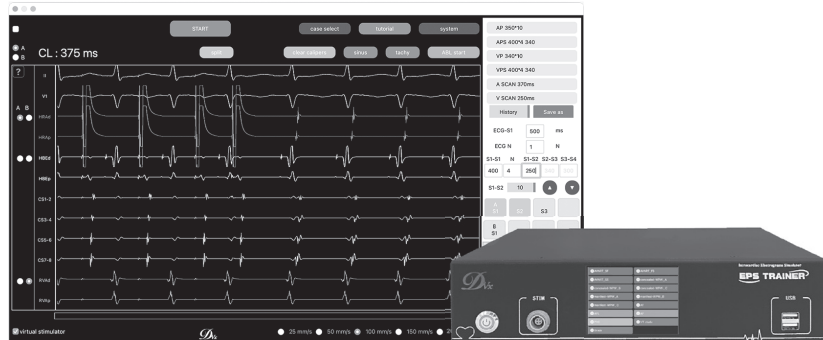


Boehringer
Ingelheim

人に優しい医療を

アブレーション症例の流れを学習できる
Intracardiac EGMシミュレーター

EPS TRAINER



※ EPS TRAINERを使用したイメージ画面(開発中につき、実際と異なる場合があります)

ソフトウェア

リアルタイムで実際の臨床同様の眼を養う
診断能力トレーニングを実現

ハードウェア

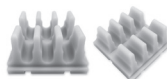
刺激伝導系・不応期を考慮した
心臓電気生理学的反応を再現

お手持ちのスティミュレーターと接続可能 ● パーチャルスティミュレーション機能を搭載
OR
EPS・ABL手技中に発生する各電位を再現します(不整脈の誘発と停止/ペーシング検査の再現/通電後の電位変化)

- 症例ランダムセレクト機能
- いつでもどこでも持ち運び可能な小型設計(約A4×H70mm)
- 簡易ラボ機能(キャリパー/レビュー機能/カテ表示変更/ペーパースピード変更等)
- 各種頻拍のEPS結果/特性の学習を可能とするチュートリアルを付属

その他カテ室を支える製品

あんてい君



シャフトの先端を安定させる
シリコン製グリップホルダー

エコードーナツ™
Echo Donut



ケーブル用減菌済み
ディスプレイカバー

WONDER BELT
ワンダーベルト



長時間のプロテクター着用時に
肩・腰への負担を軽減するベルト

インプラント用 U じゆ物
可動タイプ



カテ室での
インプラント手技をサポート

ガリバー™ Gulliver シリーズ

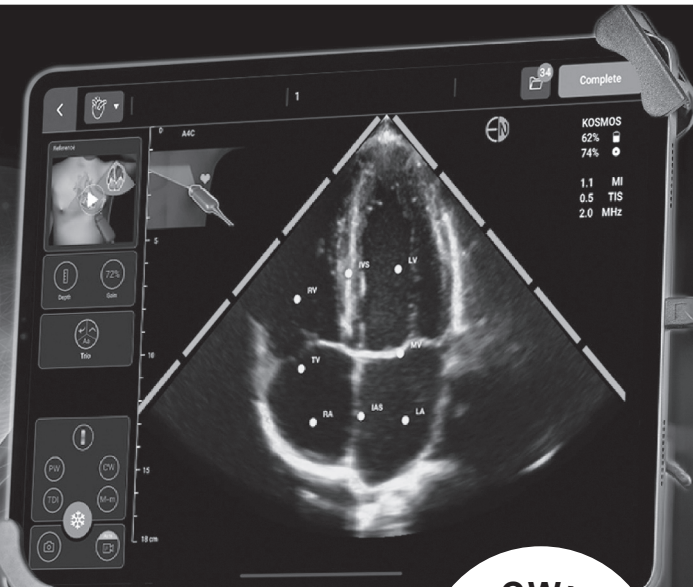


カテ台で上半身・腕・膝をホールド
するディスプレイホルダー

DVx デーブイエックス株式会社

〒108-0075 東京都港区港南1丁目8-15 Wビル □ <https://www.dvx.jp>

KOSMOS
by EchoNous



進化するKOSMOSは 新たに、iPad※にも対応

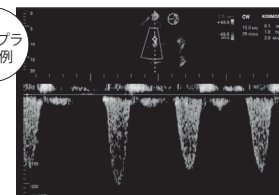
- Redefining Point of Care Ultrasound -

CWと
オートEFで
心不全フォロー
アップ

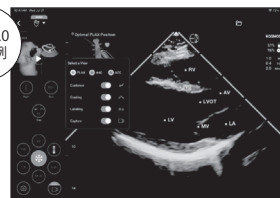
タブレット型超音波画像診断装置 KOSMOS Series Plus

- ・汎用タブレットが超音波診断装置に
- ・CWドブラ検査が可能
- ・AI技術を活用して開発
- ・Trio機能2.0 (A4C/A2C/PLAX スキャンサポート機能)で迅速な
至適断面描出と心機能計測をサポート
- ・オートEF機能、EFをわずか約10秒以内に計測

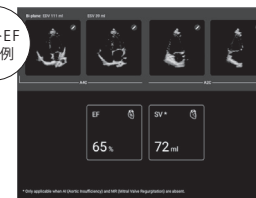
CWドブラ
表示例



Torio2.0
表示例



オートEF
表示例



一般名称:汎用超音波画像診断装置 (JMDN:40761000)
販売名:超音波画像診断装置 KOSMOS Series Plus
認証番号:306A16Z100001000

©2020 EchoNous, Inc. EchoNousおよびKOSMOSは、
EchoNous, Inc.の登録商標です。
※iPadはApple社の登録商標です。
適合機種がございます。詳細は弊社もしくはお取り扱い
店にお問い合わせください。

外国指定管理医療機器製造等事業者: ECHONOUS, INC. [米国]

選任製造販売業者: 有限会社ユーマンネットワーク 循環器領域 正規販売代理店

DVx デーブイエックス株式会社

医療・健康ニーズに応じて、
人々の健康・福祉にいつそう貢献したい。



患者さんのために、わたしたちにできることがきっとある。
これからも医療・健康ニーズをとらえ、独創的な新薬を開発してまいります。



MOCHIDA

持田製薬株式会社

<https://www.mochida.co.jp/>